

CHSY2 antibody, Internal

Cat. No. GTX80597

Host	Rabbit
Clonality	Polyclonal
Isotype	IgG
Applications	WB, IHC-P, FCM
Reactivity	Human, Mouse

Package
400 µl

Applications

Application Note

*Optimal dilutions/concentrations should be determined by the researcher.

Suggested dilution	Recommended dilution
WB	1:1000
IHC-P	1:50-1:100
FCM	1:10-1:50

Not tested in other applications.

Calculated MW 85 kDa. ([Note](#))

Properties

Form	Liquid
Buffer	PBS
Preservative	0.09% Sodium azide
Storage	Store as concentrated solution. Centrifuge briefly prior to opening vial. For short-term storage (1-2 weeks), store at 4°C. For long-term storage, aliquot and store at -20°C or below. Avoid multiple freeze-thaw cycles.
Concentration	Batch dependent (Please refer to the vial label for the specific concentration.)
Immunogen	KLH conjugated synthetic peptide between 327-354 amino acids from the Central region of human CHSY2.
Purification	Protein A purified, followed by peptide affinity purification.
Conjugation	Unconjugated

Note

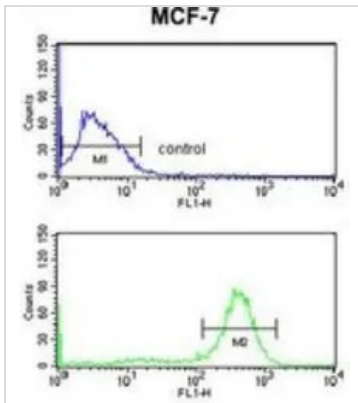
For laboratory research use only. Not for any clinical, therapeutic, or diagnostic use in humans or animals. Not for animal or human consumption.

Purchasers shall not, and agree not to enable third parties to, analyze, copy, reverse engineer or otherwise attempt to determine the structure or sequence of the product.



For full product information, images and publications, please visit our [website](#).

DATA IMAGES

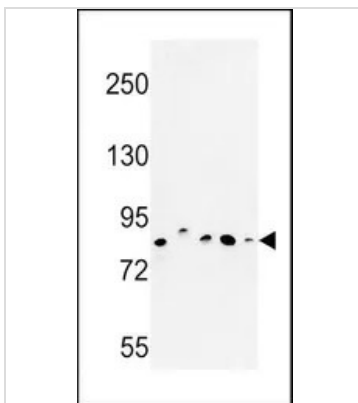


GTx80597 FCM Image

FACS analysis of MCF-7 cells using GTx80597 CHPF antibody, Internal.

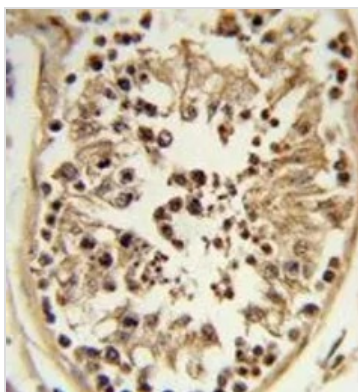
Top histogram : negative control

Bottom histogram : MCF-7 cells



GTx80597 WB Image

WB analysis of MDA-MB435, MCF-7, HepG2, A375 cell and mouse testis tissue lysate (35ug/lane) using GTx80597 CHPF antibody, Internal.



GTx80597 IHC-P Image

IHC-P analysis of human testis tissue using GTx80597 CHPF antibody, Internal.



For full product information, images and publications, please visit our [website](http://www.genetex.com).