

Nkx3.1 antibody, Internal

Cat. No. GTX80628

Host	Rabbit
Clonality	Polyclonal
Isotype	IgG
Applications	WB, IHC-P, FCM
Reactivity	Human

Package
400 µl

Applications

Application Note

*Optimal dilutions/concentrations should be determined by the researcher.

Suggested dilution	Recommended dilution
WB	1:1000
IHC-P	1:50-1:100
FCM	1:10-1:50

Not tested in other applications.

Calculated MW 26 kDa. ([Note](#))

Properties

Form	Liquid
Buffer	PBS
Preservative	0.09% Sodium azide
Storage	Store as concentrated solution. Centrifuge briefly prior to opening vial. For short-term storage (1-2 weeks), store at 4°C. For long-term storage, aliquot and store at -20°C or below. Avoid multiple freeze-thaw cycles.
Concentration	Batch dependent (Please refer to the vial label for the specific concentration.)
Immunogen	KLH conjugated synthetic peptide between 118-145 amino acids from the Central region of human NKX3-1.
Purification	Protein A purified, followed by peptide affinity purification.
Conjugation	Unconjugated

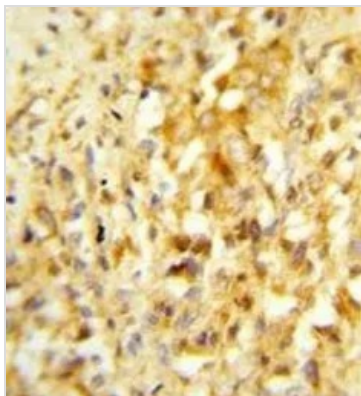
Note

For laboratory research use only. Not for any clinical, therapeutic, or diagnostic use in humans or animals. Not for animal or human consumption.

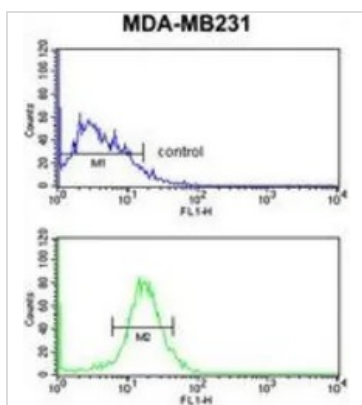
Purchasers shall not, and agree not to enable third parties to, analyze, copy, reverse engineer or otherwise attempt to determine the structure or sequence of the product.



For full product information, images and publications, please visit our [website](#).

DATA IMAGES

GTX80628 IHC-P Image

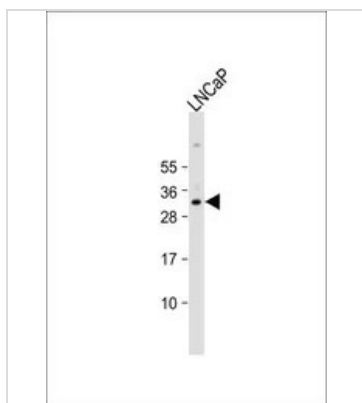
IHC-P analysis of human prostate carcinoma using GTX80628 Nkx3.1 antibody, Internal.


GTX80628 FCM Image

FACS analysis of MDA-MB231 cells using GTX80628 Nkx3.1 antibody, Internal.

Top histogram : negative control

Bottom histogram : MDA-MB231 cells


GTX80628 WB Image

WB analysis of LNCaP whole cell lysate using GTX80628 Nkx3.1 antibody, Internal.

Loading : 20 µg per lane

Dilution : 1:8000



For full product information, images and publications, please visit our [website](https://www.genetex.com).