

APEX2 antibody, Internal

Cat. No. GTX80642

Host	Rabbit
Clonality	Polyclonal
Isotype	IgG
Applications	WB, ICC/IF, IHC-P, FCM
Reactivity	Human

References (1)

Package

400 µl

Applications

Application Note

*Optimal dilutions/concentrations should be determined by the researcher.

Suggested dilution	Recommended dilution
WB	1:1000
ICC/IF	1:25
IHC-P	1:10-1:50
FCM	1:10-1:50

Not tested in other applications.

Calculated MW 57 kDa. ([Note](#))

Properties

Form	Liquid
Buffer	PBS
Preservative	0.09% Sodium azide
Storage	Store as concentrated solution. Centrifuge briefly prior to opening vial. For short-term storage (1-2 weeks), store at 4°C. For long-term storage, aliquot and store at -20°C or below. Avoid multiple freeze-thaw cycles.
Concentration	Batch dependent (Please refer to the vial label for the specific concentration.)
Immunogen	KLH conjugated synthetic peptide between 143-171 amino acids from the Central region of human APEX2.
Purification	Protein A purified, followed by peptide affinity purification.
Conjugation	Unconjugated

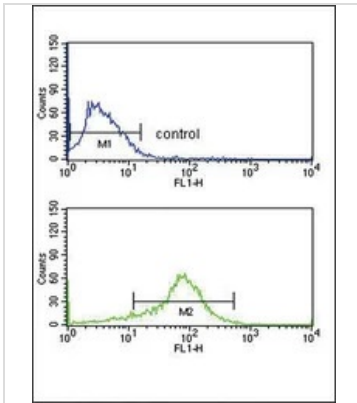
Note

For laboratory research use only. Not for any clinical, therapeutic, or diagnostic use in humans or animals. Not for animal or human consumption.

Purchasers shall not, and agree not to enable third parties to, analyze, copy, reverse engineer or otherwise attempt to determine the structure or sequence of the product.



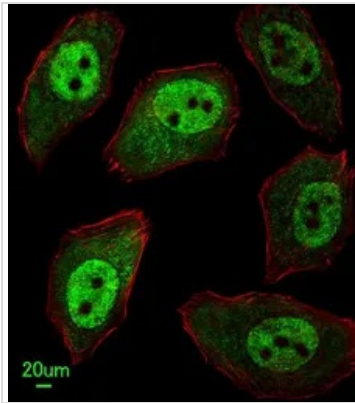
For full product information, images and publications, please visit our [website](#).

DATA IMAGES

GTX80642 FCM Image

FACS analysis of MCF-7 cells using GTX80642 APEX2 antibody, Internal.

Top histogram : negative control

Bottom histogram : MCF-7 cells

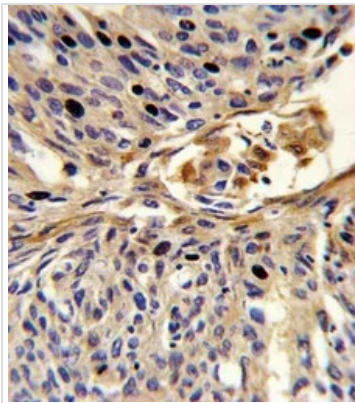

GTX80642 ICC/IF Image

ICC/IF analysis of U251 cells using GTX80642 APEX2 antibody, Internal.

Green : APEX2

Red : Actin filament

Dilution : 1:25


GTX80642 IHC-P Image

IHC-P analysis of human lung carcinoma using GTX80642 APEX2 antibody, Internal.



For full product information, images and publications, please visit our [website](https://www.genetex.com).