

## AKAP12 antibody

Cat. No. GTX80649

Host	Sheep
Clonality	Polyclonal
Isotype	IgG
Applications	WB, IP, IHC
Reactivity	Rat

Package  
125 µg

## Applications

## Application Note

## Recommended Starting Dilutions:

IP: Use at a concentration of 2-5 µg/mL

WB: Use at a concentration of 2-5 µg/mL

IHC: Use at an assay-dependent dilution

Optimal dilutions should be determined experimentally by the researcher.

Calculated MW 181 kDa. ( [Note](#) )

## Properties

Form	Liquid
Buffer	PBS
Preservative	0.08% Sodium azide
Storage	Store as concentrated solution. Centrifuge briefly prior to opening vial. For short-term storage (1-2 weeks), store at 4°C. For long-term storage, aliquot and store at -20°C or below. Avoid multiple freeze-thaw cycles.
Concentration	Batch dependent (Please refer to the vial label for the specific concentration.)
Immunogen	Rat AKAP12 fragment corresponding to amino acid 620-1596.
Purification	Ammonium sulfate purified
Conjugation	Unconjugated

## Note

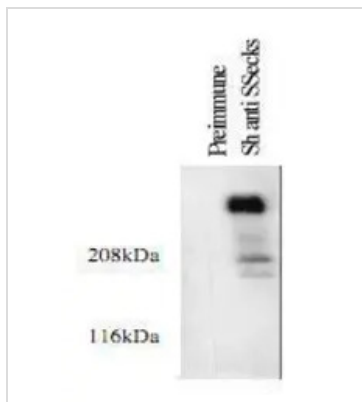
For laboratory research use only. Not for any clinical, therapeutic, or diagnostic use in humans or animals. Not for animal or human consumption.

Purchasers shall not, and agree not to enable third parties to, analyze, copy, reverse engineer or otherwise attempt to determine the structure or sequence of the product.



For full product information, images and publications, please visit our [website](#).

## DATA IMAGES



### GTX80649 WB Image

Total cellular protein from cultured rat aortic smooth muscle cells was prepared and analyzed. The membrane was probed with 5 µg/ml of pre-immune serum or 5 µg of SSecks antibody (3 second exposure shown). The blot was then washed and probed with monoclonal anti-sheep IgG antibody coupled to horseradish peroxidase 1:10,000, and detected with luminol.



For full product information, images and publications, please visit our [website](https://www.genetex.com).