

DDDDK tag antibody [F.G2]

Cat. No. GTX80656

Host	Mouse
Clonality	Monoclonal
Isotype	IgG2b
Applications	WB, ICC/IF, IP
Reactivity	Species independent

References (3)

Package

100 µg

Applications

Application Note

For IF: Use at a dilution of 1:200. For IP: Use at a dilution of 1:200. For WB: Use at a dilution of 1:1,000. Optimal dilutions/concentrations should be determined by the researcher.

Product Note

Recognizes over-expressed proteins containing DYKDDDDK epitope tag fused to either amino- or carboxy-termini of targeted proteins in transfected mammalian cells.

Properties

Form	Liquid
Buffer	PBS, 50% Glycerol
Preservative	No preservatives
Storage	Store as concentrated solution. Centrifuge briefly prior to opening vial. For short-term storage (1-2 weeks), store at 4°C. For long-term storage, aliquot and store at -20°C or below. Avoid multiple freeze-thaw cycles.
Concentration	1 mg/ml (Please refer to the vial label for the specific concentration.)
Immunogen	A synthetic peptide (DYKDDDDK) coupled to KLH.
Conjugation	Unconjugated

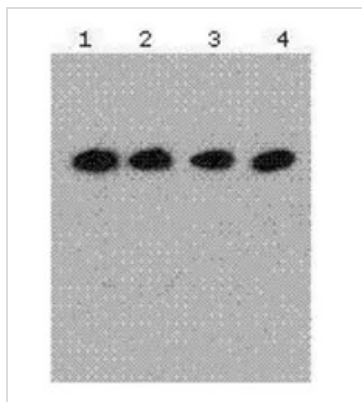
Note

For laboratory research use only. Not for any clinical, therapeutic, or diagnostic use in humans or animals. Not for animal or human consumption.

Purchasers shall not, and agree not to enable third parties to, analyze, copy, reverse engineer or otherwise attempt to determine the structure or sequence of the product.



For full product information, images and publications, please visit our [website](#).

DATA IMAGES

GTX80656 WB Image

Western Blot analysis of 293 cells transfected with DYKDDDK-tagged vectors at different concentration(0.5mg/ml),

Lane 4:lowest concentration(0.1ug/ml)



For full product information, images and publications, please visit our [website](#).