

## beta Catenin antibody [9F2]

Cat. No. GTX80686

<b>Host</b>	Mouse
<b>Clonality</b>	Monoclonal
<b>Isotype</b>	IgG1
<b>Applications</b>	WB, ICC/IF, IP
<b>Reactivity</b>	Human, Mouse

Package  
100 µg

## Applications

## Application Note

\*Optimal dilutions/concentrations should be determined by the researcher.

Suggested dilution	Recommended dilution
WB	1-3 µg/ml
ICC/IF	10 µg/ml
IP	1 µg/ml

Not tested in other applications.

**Calculated MW** 85 kDa. ( [Note](#) )

## Properties

<b>Form</b>	Liquid
<b>Buffer</b>	PBS, 0.1% BSA
<b>Preservative</b>	0.05% Sodium azide
<b>Storage</b>	Store as concentrated solution. Centrifuge briefly prior to opening vial. For short-term storage (1-2 weeks), store at 4°C. For long-term storage, aliquot and store at -20°C or below. Avoid multiple freeze-thaw cycles.
<b>Concentration</b>	1 mg/ml (Please refer to the vial label for the specific concentration.)
<b>Immunogen</b>	120 kDa MBP/beta catenin fusion protein purified on amylose column.
<b>Purification</b>	Protein G purified
<b>Conjugation</b>	Unconjugated

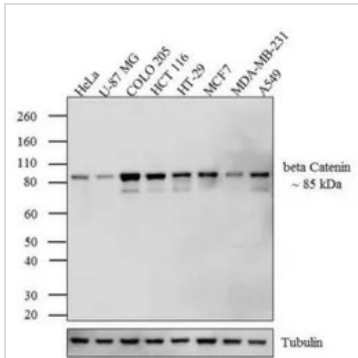
## Note

For laboratory research use only. Not for any clinical, therapeutic, or diagnostic use in humans or animals. Not for animal or human consumption.

Purchasers shall not, and agree not to enable third parties to, analyze, copy, reverse engineer or otherwise attempt to determine the structure or sequence of the product.

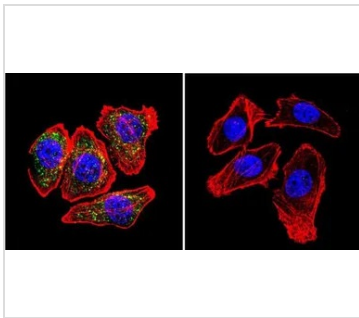


For full product information, images and publications, please visit our [website](#).

**DATA IMAGES**

**GTx80686 WB Image**

WB analysis of whole cell extracts (30 µg lysate) of HeLa (Lane 1), U-87 MG (Lane 2), COLO 205 (Lane 3), HCT 116 (lane 4), HT-29 (lane 5), MCF7 (lane 6), MDA-MB-231 (lane 7) and A549 (lane 8) using GTx80686 beta Catenin antibody [9F2].

Dilution : 1-3 µg/ml


**GTx80686 ICC/IF Image**

ICC/IF analysis of U251 cells using GTx80686 beta Catenin antibody [9F2]. Cells were probed without (right) or with (left) an antibody.

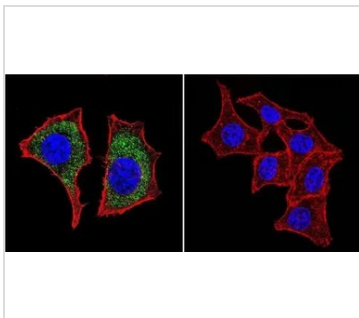
Green : Primary antibody

Blue : Nuclei

Red : Actin

Fixation : formaldehyde

Dilution : 1:20 overnight at 4°C


**GTx80686 ICC/IF Image**

ICC/IF analysis of HeLa cells using GTx80686 beta Catenin antibody [9F2]. Cells were probed without (right) or with (left) an antibody.

Green : Primary antibody

Blue : Nuclei

Red : Actin

Fixation : formaldehyde

Dilution : 1:20 overnight at 4°C



For full product information, images and publications, please visit our [website](https://www.genetex.com).