

Acetyl Lysine antibody [1C6]

Cat. No. GTX80693

Host	Mouse
Clonality	Monoclonal
Isotype	IgG
Applications	WB, ICC/IF, FCM, IP, Dot, ChIP assay
Reactivity	Species independent

References (3)

Package

100 µg

Applications

Application Note

*Optimal dilutions/concentrations should be determined by the researcher.

Suggested dilution	Recommended dilution
WB	1:500 - 1:2000
ICC/IF	1:100 - 1:500
FCM	Assay dependent
IP	3 µg
Dot	Assay dependent
ChIP assay	10 µg

Not tested in other applications.

Properties

Form	Liquid
Buffer	PBS, 0.1% BSA
Preservative	0.05% Sodium azide
Storage	Store as concentrated solution. Centrifuge briefly prior to opening vial. For short-term storage (1-2 weeks), store at 4°C. For long-term storage, aliquot and store at -20°C or below. Avoid multiple freeze-thaw cycles.
Concentration	1 mg/ml (Please refer to the vial label for the specific concentration.)
Immunogen	Synthetic peptide sequence surrounding the acetylated lysine 9 of histone H3.
Purification	Protein G purified
Conjugation	Unconjugated



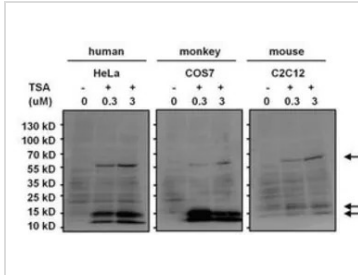
For full product information, images and publications, please visit our [website](#).

For laboratory research use only. Not for any clinical, therapeutic, or diagnostic use in humans or animals. Not for animal or human consumption.

Note

Purchasers shall not, and agree not to enable third parties to, analyze, copy, reverse engineer or otherwise attempt to determine the structure or sequence of the product.

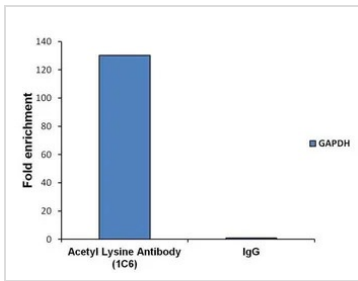
DATA IMAGES



GTX80693 WB Image

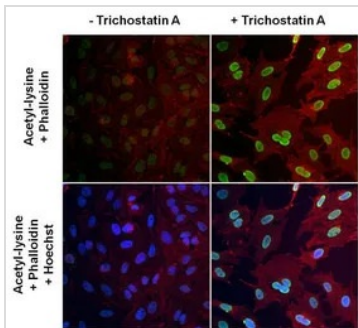
WB analysis of untreated (DMSO only) or cells treated with 0.3uM or 3uM of Trichostatin A (TSA) for 16 hours using GTX80693 Acetyl Lysine antibody [1C6].

Dilution : 1:1000



GTX80693 ChIP assay Image

ChIP analysis of 4×10^6 LNCaP cells using GTX80693 Acetyl Lysine antibody [1C6]. Quantitation of immunoprecipitated GAPDH promoter sequence is presented as fold enrichment of the acetyl lysine monoclonal antibody versus non-specific IgG.



GTX80693 ICC/IF Image

ICC/IF analysis of HeLa cells untreated (left panels) or treated with 0.3uM Trichostatin A for 16 hours (right panels) using GTX80693 Acetyl Lysine antibody [1C6].

Green : Primary antibody

Blue : Nuclei

Red : Actin

Fixation : Formalin

Permeabilization : 0.1% Triton X-100 in TBS for 10 minutes



For full product information, images and publications, please visit our [website](https://www.genetex.com).