

KAP1 antibody [20C1]

Cat. No. GTX80695

Host	Mouse
Clonality	Monoclonal
Isotype	IgG
Applications	WB, ICC/IF, IP, ChIP assay, Gel supershift assays
Reactivity	Human, Mouse

Package
100 µg

Applications

Application Note

*Optimal dilutions/concentrations should be determined by the researcher.

Suggested dilution	Recommended dilution
WB	1 - 3 µg/ml
ICC/IF	2 µg/ml
IP	Assay dependent
ChIP assay	Assay dependent
Gel supershift assays	Assay dependent

Not tested in other applications.

Calculated MW 89 kDa. ([Note](#))

Properties

Form	Liquid
Buffer	PBS, 0.1% BSA
Preservative	0.05% Sodium azide
Storage	Store as concentrated solution. Centrifuge briefly prior to opening vial. For short-term storage (1-2 weeks), store at 4°C. For long-term storage, aliquot and store at -20°C or below. Avoid multiple freeze-thaw cycles.
Concentration	1 mg/ml (Please refer to the vial label for the specific concentration.)
Immunogen	Recombinant protein corresponding to residues 60-383 of the human TIF1 beta protein.
Purification	Protein G purified
Conjugation	Unconjugated



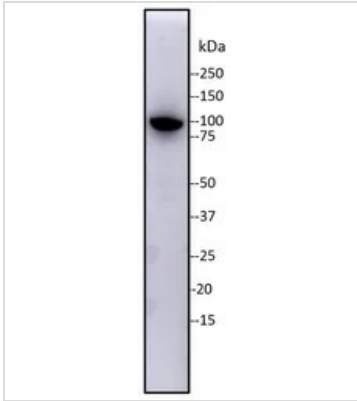
For full product information, images and publications, please visit our [website](#).

For laboratory research use only. Not for any clinical, therapeutic, or diagnostic use in humans or animals. Not for animal or human consumption.

Note

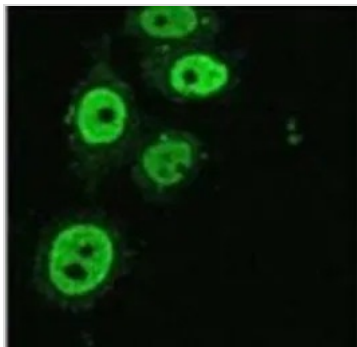
Purchasers shall not, and agree not to enable third parties to, analyze, copy, reverse engineer or otherwise attempt to determine the structure or sequence of the product.

DATA IMAGES



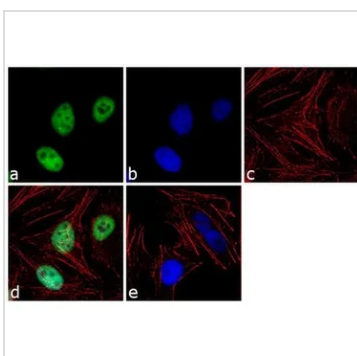
GTX80695 WB Image

WB analysis of gamma irradiated HeLa cells using GTX80695 KAP1 antibody [20C1].



GTX80695 ICC/IF Image

ICC/IF analysis of gamma irradiated HeLa cells using GTX80695 KAP1 antibody [20C1].



GTX80695 ICC/IF Image

ICC/IF analysis of HeLa cells using GTX80695 KAP1 antibody [20C1]. Panel e is a no primary antibody control.

Green : Primary antibody

Blue : Nuclei

Red : Actin

Fixation : 4% paraformaldehyde

Permeabilization : 0.1% Triton X-100 for 10 minute

Dilution : 2 µg/ml in 0.1% BSA and incubated for 3 hours at room temperature



For full product information, images and publications, please visit our [website](#).