

Actin antibody [mAbGEa]

Cat. No. GTX80809

Host	Mouse
Clonality	Monoclonal
Isotype	IgG1
Applications	WB, ICC/IF, IHC-P, IP, ELISA, ChIP assay, IHC
Reactivity	Human, Mouse, Rat, Zebrafish, Yeast, Sheep, Drosophila, Bovine, Pig, Xenopus, Plant, Bacteria

References (3)

Package

100 µl

Applications

Application Note

*Optimal dilutions/concentrations should be determined by the researcher.

Suggested dilution	Recommended dilution
WB	1:1,000
ICC/IF	1:10-1:100
IHC-P	1:100
IP	Assay dependent
ELISA	Assay dependent
ChIP assay	Assay dependent
IHC	Assay dependent

Not tested in other applications.

Calculated MW 42 kDa. ([Note](#))**Product Note** This antibody has shown cross-reactivity with actin 1, 2, 3, 4, 7, 8, 11 and 12.

Properties

Form	Liquid
Buffer	Ascites
Preservative	0.05% Sodium azide
Storage	Store as concentrated solution. Centrifuge briefly prior to opening vial. For short-term storage (1-2 weeks), store at 4°C. For long-term storage, aliquot and store at -20°C or below. Avoid multiple freeze-thaw cycles.
Immunogen	Purified Arabidopsis actin protein.
Purification	Unpurified
Conjugation	Unconjugated



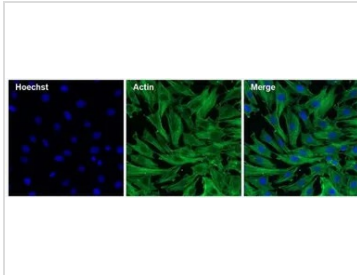
For full product information, images and publications, please visit our [website](#).

For laboratory research use only. Not for any clinical, therapeutic, or diagnostic use in humans or animals. Not for animal or human consumption.

Note

Purchasers shall not, and agree not to enable third parties to, analyze, copy, reverse engineer or otherwise attempt to determine the structure or sequence of the product.

DATA IMAGES



GTX80809 ICC/IF Image

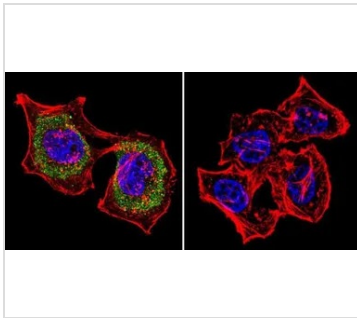
ICC/IF analysis of 3T3 cells using GTX80809 Actin antibody [mAbGEa].

Green : Primary antibody

Blue : cell nucleus

Permeabilization : 0.1% Triton X-100 in TBS for 15 minutes at room temperature

Dilution : 1:100 in blocking buffer for at least 1 hour at room temperature



GTX80809 ICC/IF Image

ICC/IF analysis of HeLa cells using GTX80809 Actin antibody [mAbGEa]. Cells were probed without (right) or with(left) an antibody.

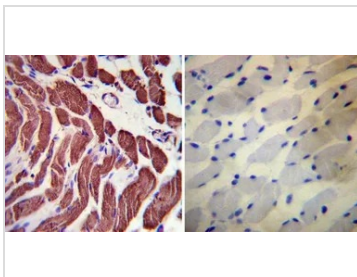
Green : Primary antibody

Blue : Nuclei

Red : Actin

Fixation : formaldehyde

Dilution : 1:20 overnight at 4°C



GTX80809 IHC-P Image

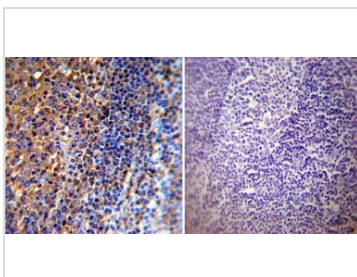
IHC-P analysis of human skeletal muscle tissue using GTX80809 Actin antibody [mAbGEa].

Left : Primary antibody

Right : Negative control without primary antibody

Antigen retrieval : heat induced antigen retrieval was performed using 10mM sodium citrate (pH6.0) buffer, microwaved for 8-15 minutes

Dilution : 1:1000



GTX80809 IHC-P Image

IHC-P analysis of human tonsil tissue using GTX80809 Actin antibody [mAbGEa].

Left : Primary antibody

Right : Negative control without primary antibody

Antigen retrieval : heat induced antigen retrieval was performed using 10mM sodium citrate (pH6.0) buffer, microwaved for 8-15 minutes

Dilution : 1:1000



For full product information, images and publications, please visit our [website](#).