

## ALOX12 antibody, C-term

Cat. No. GTX80966

|                     |                        |
|---------------------|------------------------|
| <b>Host</b>         | Rabbit                 |
| <b>Clonality</b>    | Polyclonal             |
| <b>Isotype</b>      | IgG                    |
| <b>Applications</b> | WB, ICC/IF, IHC-P, FCM |
| <b>Reactivity</b>   | Human                  |

References ( 2 )

Package

400 µl

## Applications

## Application Note

\*Optimal dilutions/concentrations should be determined by the researcher.

| Suggested dilution | Recommended dilution |
|--------------------|----------------------|
| WB                 | 1:1000               |
| ICC/IF             | 1:100                |
| IHC-P              | 1:10-1:50            |
| FCM                | 1:10-1:50            |

Not tested in other applications.

Calculated MW 76 kDa. ( [Note](#) )

## Properties

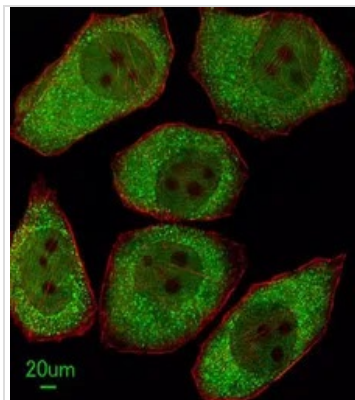
|                      |                                                                                                                                                                                                                            |
|----------------------|----------------------------------------------------------------------------------------------------------------------------------------------------------------------------------------------------------------------------|
| <b>Form</b>          | Liquid                                                                                                                                                                                                                     |
| <b>Buffer</b>        | PBS                                                                                                                                                                                                                        |
| <b>Preservative</b>  | 0.09% Sodium azide                                                                                                                                                                                                         |
| <b>Storage</b>       | Store as concentrated solution. Centrifuge briefly prior to opening vial. For short-term storage (1-2 weeks), store at 4°C. For long-term storage, aliquot and store at -20°C or below. Avoid multiple freeze-thaw cycles. |
| <b>Concentration</b> | Batch dependent (Please refer to the vial label for the specific concentration.)                                                                                                                                           |
| <b>Immunogen</b>     | KLH conjugated synthetic peptide between 618-650 amino acids from the C-terminal region of human ALOX12.                                                                                                                   |
| <b>Purification</b>  | Saturated Ammonium Sulfate (SAS) precipitation followed by dialysis against PBS.                                                                                                                                           |
| <b>Conjugation</b>   | Unconjugated                                                                                                                                                                                                               |

## Note

For laboratory research use only. Not for any clinical, therapeutic, or diagnostic use in humans or animals. Not for animal or human consumption.

Purchasers shall not, and agree not to enable third parties to, analyze, copy, reverse engineer or otherwise attempt to determine the structure or sequence of the product.

For full product information, images and publications, please visit our [website](#).

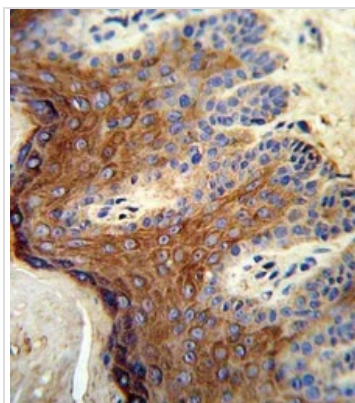
**DATA IMAGES**

**GTX80966 ICC/IF Image**

ICC/IF analysis of A549 cells using GTX80966 ALOX12 antibody, C-term.

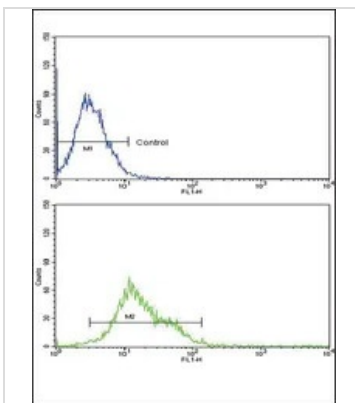
Green : ALOX12

Red : Actin filament

Dilution : 1:100


**GTX80966 IHC-P Image**

IHC-P analysis of human skin tissue using GTX80966 ALOX12 antibody, C-term.


**GTX80966 FCM Image**

FACS analysis of K562 cells using GTX80966 ALOX12 antibody, C-term.

Top histogram : negative control

Bottom histogram : K562 cells



For full product information, images and publications, please visit our [website](http://www.genetex.com).