

## Glutaminase antibody, C-term

Cat. No. GTX81012

Host	Rabbit
Clonality	Polyclonal
Isotype	IgG
Applications	WB, ICC/IF, IHC-P, FCM
Reactivity	Human, Mouse, Rat

References ( 6 )

Package

200 µl

## Applications

## Application Note

\*Optimal dilutions/concentrations should be determined by the researcher.

Suggested dilution	Recommended dilution
WB	1:1000
ICC/IF	1:25
IHC-P	1:25
FCM	1:25

Not tested in other applications.

Calculated MW 73 kDa. ( [Note](#) )

## Properties

Form	Liquid
Buffer	PBS
Preservative	0.09% Sodium azide
Storage	Store as concentrated solution. Centrifuge briefly prior to opening vial. For short-term storage (1-2 weeks), store at 4°C. For long-term storage, aliquot and store at -20°C or below. Avoid multiple freeze-thaw cycles.
Concentration	Batch dependent (Please refer to the vial label for the specific concentration.)
Immunogen	KLH conjugated synthetic peptide between 516-545 amino acids from the C-terminal region of human GLS.
Purification	Protein A purified, followed by peptide affinity purification.
Conjugation	Unconjugated

## Note

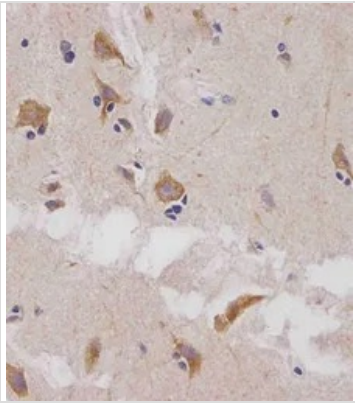
For laboratory research use only. Not for any clinical, therapeutic, or diagnostic use in humans or animals. Not for animal or human consumption.

Purchasers shall not, and agree not to enable third parties to, analyze, copy, reverse engineer or otherwise attempt to determine the structure or sequence of the product.



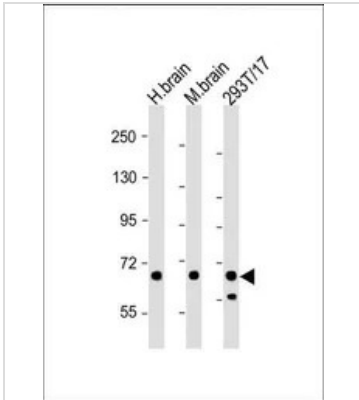
For full product information, images and publications, please visit our [website](#).

## DATA IMAGES



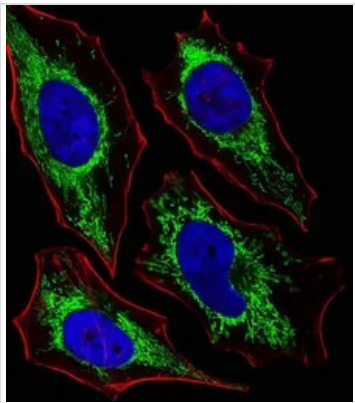
### GTx81012 IHC-P Image

IHC-P analysis of human brain tissue using GTx81012 GLS antibody, C-term.  
Antigen retrieval : heat-induced antigen retrieval with a citrate buffer (pH6)  
Dilution : 1:25



### GTx81012 WB Image

WB analysis of various samples using GTx81012 GLS antibody, C-term.  
Lane 1: human brain lysate  
Lane 2: mouse brain lysate  
Lane 3: 293T/17 whole cell lysate  
Loading : 20 µg per lane  
Dilution : 1:2000



### GTx81012 ICC/IF Image

ICC/IF analysis of HeLa cells using GTx81012 GLS antibody, C-term.  
Green : GLS  
Red : Actin filament  
Blue : cell nucleus  
Dilution : 1:25



For full product information, images and publications, please visit our [website](https://www.genetex.com).