

IL18 Receptor beta antibody, N-term

Cat. No. GTX81019

Host	Rabbit
Clonality	Polyclonal
Isotype	IgG
Application	WB, IHC-P, FACS
Reactivity	Human

Package
400 µl

APPLICATION

Application Note

*Optimal dilutions/concentrations should be determined by the researcher.

Suggested dilution	Recommended dilution
WB	1:1000
IHC-P	1:10-1:50
FACS	1:10-1:50

Not tested in other applications.

Calculated MW 68 kDa. ([Note](#))

PROPERTIES

Form	Liquid
Buffer	PBS
Preservative	0.09% Sodium azide
Storage	Store as concentrated solution. Centrifuge briefly prior to opening vial. For short-term storage (1-2 weeks), store at 4°C. For long-term storage, aliquot and store at -20°C or below. Avoid multiple freeze-thaw cycles.
Concentration	Batch dependent (Please refer to the vial label for the specific concentration.)
Immunogen	KLH conjugated synthetic peptide between 73-101 amino acids from the N-terminal region of human IL18RAP.
Purification	Protein A purified, followed by peptide affinity purification.
Conjugation	Unconjugated

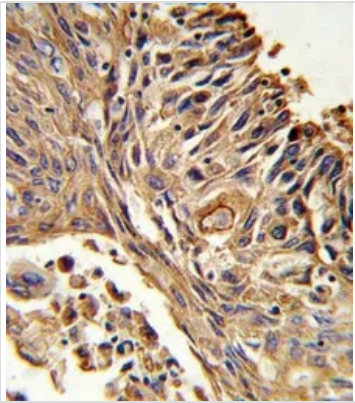
Note

For laboratory research use only. Not for any clinical, therapeutic, or diagnostic use in humans or animals. Not for animal or human consumption.

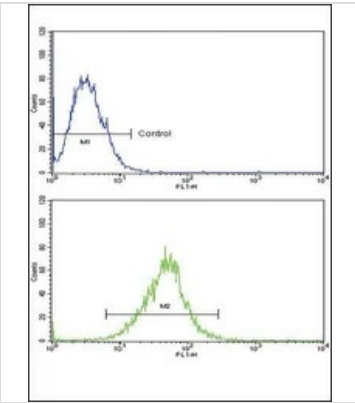
Purchasers shall not, and agree not to enable third parties to, analyze, copy, reverse engineer or otherwise attempt to determine the structure or sequence of the product.



For full product information, images and publications, please visit our [website](#).

DATA IMAGES

GTX81019 IHC-P Image

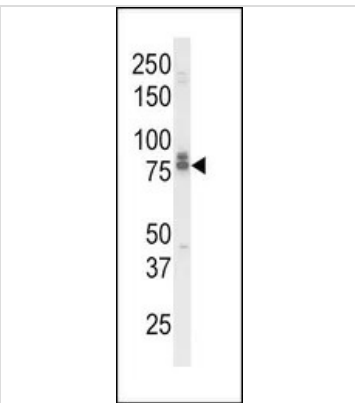
IHC-P analysis of human lung carcinoma using GTX81019 IL18 Receptor beta antibody, N-term.


GTX81019 FACS Image

FACS analysis of K562 cells using GTX81019 IL18 Receptor beta antibody, N-term.

Top histogram : negative control

Bottom histogram : K562 cells


GTX81019 WB Image

WB analysis of K562 cell lysate (35ug/lane) using GTX81019 IL18 Receptor beta antibody, N-term.



For full product information, images and publications, please visit our [website](https://www.genetex.com).