

## IL12A / IL12 p35 antibody, C-term

Cat. No. GTX81020

Host	Rabbit
Clonality	Polyclonal
Isotype	IgG
Application	WB, IHC-P, FACS
Reactivity	Human

Package  
400 µl

## APPLICATION

## Application Note

\*Optimal dilutions/concentrations should be determined by the researcher.

Suggested dilution	Recommended dilution
WB	1:1000
IHC-P	1:10-1:50
FACS	1:10-1:50

Not tested in other applications.

Calculated MW 25 kDa. ( [Note](#) )

## PROPERTIES

Form	Liquid
Buffer	PBS
Preservative	0.09% Sodium azide
Storage	Store as concentrated solution. Centrifuge briefly prior to opening vial. For short-term storage (1-2 weeks), store at 4°C. For long-term storage, aliquot and store at -20°C or below. Avoid multiple freeze-thaw cycles.
Concentration	Batch dependent (Please refer to the vial label for the specific concentration.)
Immunogen	KLH conjugated synthetic peptide between 168-195 amino acids from the C-terminal region of human IL12A.
Purification	Protein A purified, followed by peptide affinity purification.
Conjugation	Unconjugated

## Note

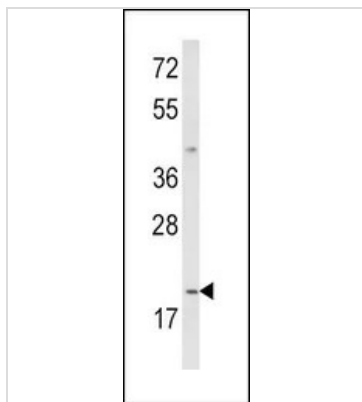
For laboratory research use only. Not for any clinical, therapeutic, or diagnostic use in humans or animals. Not for animal or human consumption.

Purchasers shall not, and agree not to enable third parties to, analyze, copy, reverse engineer or otherwise attempt to determine the structure or sequence of the product.



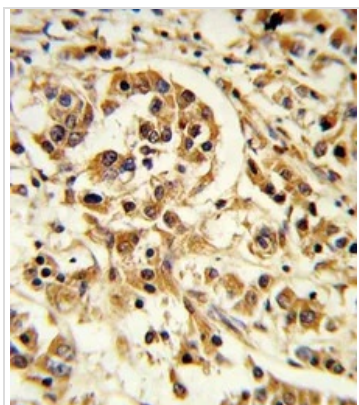
For full product information, images and publications, please visit our [website](#).

## DATA IMAGES



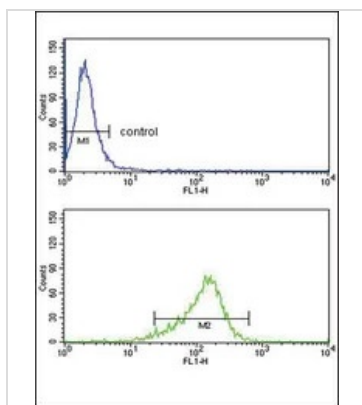
### GTx81020 WB Image

WB analysis of MDA-MB231 cell lysate (35ug/lane) using GTx81020 IL12A / IL12 p35 antibody, C-term.



### GTx81020 IHC-P Image

IHC-P analysis of human breast carcinoma using GTx81020 IL12A / IL12 p35 antibody, C-term.



### GTx81020 FACS Image

FACS analysis of MDA-MB231 cells using GTx81020 IL12A / IL12 p35 antibody, C-term.

Top histogram : negative control

Bottom histogram : MDA-MB231 cells



For full product information, images and publications, please visit our [website](https://www.genetex.com).