

## CCDC3 antibody, C-term

Cat. No. GTX81055

Host	Rabbit
Clonality	Polyclonal
Isotype	IgG
Applications	WB, IHC-P, FCM
Reactivity	Human, Mouse

References ( 1 )

Package

400 µl

## Applications

## Application Note

\*Optimal dilutions/concentrations should be determined by the researcher.

Suggested dilution	Recommended dilution
WB	1:1000
IHC-P	1:50-1:100
FCM	1:10-1:50

Not tested in other applications.

Calculated MW 31 kDa. ( [Note](#) )

## Properties

Form	Liquid
Buffer	PBS, 0.09% sodium azide.
Storage	Store as concentrated solution. Centrifuge briefly prior to opening vial. For short-term storage (1-2 weeks), store at 4°C. For long-term storage, aliquot and store at -20°C or below. Avoid multiple freeze-thaw cycles.
Concentration	Batch dependent (Please refer to the vial label for the specific concentration.)
Immunogen	KLH conjugated synthetic peptide between 195-222 amino acids from the C-terminal region of human CCDC3.
Purification	Protein A purified, followed by peptide affinity purification.
Conjugation	Unconjugated

## Note

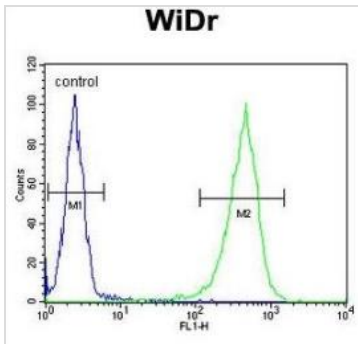
For laboratory research use only. Not for any clinical, therapeutic, or diagnostic use in humans or animals. Not for animal or human consumption.

Purchasers shall not, and agree not to enable third parties to, analyze, copy, reverse engineer or otherwise attempt to determine the structure or sequence of the product.



For full product information, images and publications, please visit our [website](#).

## DATA IMAGES

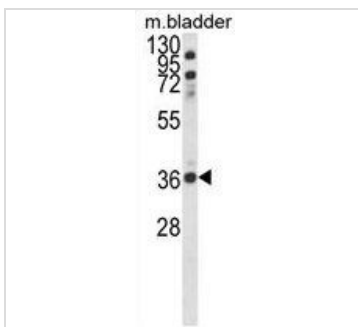


### GTX81055 FCM Image

FACS analysis of WiDr cells using GTX81055 CCDC3 antibody, C-term.

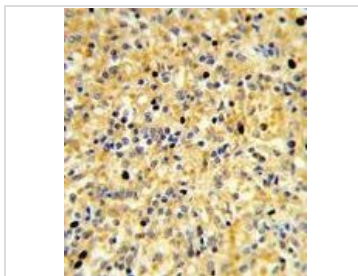
Green : primary antibody

Blue : negative control



### GTX81055 WB Image

WB analysis of mouse bladder tissue lysate (35ug/lane) using GTX81055 CCDC3 antibody, C-term.



### GTX81055 IHC-P Image

IHC-P analysis of human spleen using GTX81055 CCDC3 antibody, C-term.



For full product information, images and publications, please visit our [website](https://www.genetex.com).