

## SREBP1 antibody, Internal

Cat. No. GTX81061

Host	Rabbit
Clonality	Polyclonal
Isotype	IgG
Applications	WB, IHC-P, FCM
Reactivity	Human

Package  
400 µl

## Applications

## Application Note

\*Optimal dilutions/concentrations should be determined by the researcher.

Suggested dilution	Recommended dilution
WB	1:1000
IHC-P	1:10-1:50
FCM	1:10-1:50

Not tested in other applications.

Calculated MW 122 kDa. ([Note](#))

## Properties

Form	Liquid
Buffer	PBS
Preservative	0.09% Sodium azide
Storage	Store as concentrated solution. Centrifuge briefly prior to opening vial. For short-term storage (1-2 weeks), store at 4°C. For long-term storage, aliquot and store at -20°C or below. Avoid multiple freeze-thaw cycles.
Concentration	Batch dependent (Please refer to the vial label for the specific concentration.)
Immunogen	KLH conjugated synthetic peptide between 349-378 amino acids from the Central region of human SREBF1.
Purification	Protein A purified, followed by peptide affinity purification.
Conjugation	Unconjugated

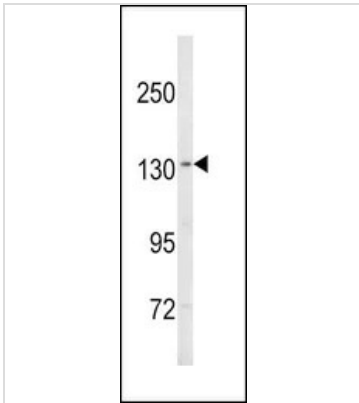
## Note

For laboratory research use only. Not for any clinical, therapeutic, or diagnostic use in humans or animals. Not for animal or human consumption.

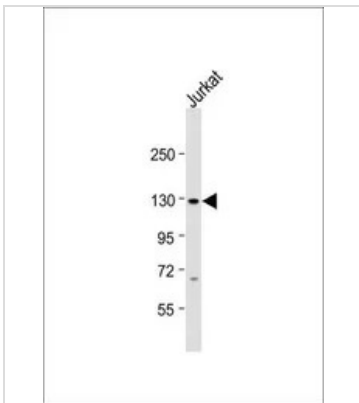
Purchasers shall not, and agree not to enable third parties to, analyze, copy, reverse engineer or otherwise attempt to determine the structure or sequence of the product.



For full product information, images and publications, please visit our [website](#).

**DATA IMAGES**

**GTX81061 WB Image**

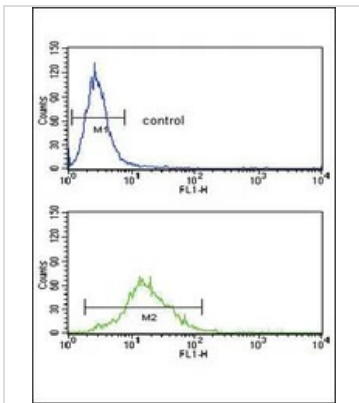
WB analysis of MDA-MB435 cell lysate (35ug/lane) using GTX81061 SREBP1 antibody, Internal.


**GTX81061 WB Image**

WB analysis of Jurkat whole cell lysate using GTX81061 SREBP1 antibody, Internal.

Loading : 20 µg per lane

Dilution : 1:1000


**GTX81061 FCM Image**

FACS analysis of Ramos cells using GTX81061 SREBP1 antibody, Internal.

Top histogram : negative control

Bottom histogram : Ramos cells



For full product information, images and publications, please visit our [website](https://www.genetex.com).