

CYP2A13 antibody, C-term

Cat. No. GTX81118

Host	Rabbit
Clonality	Polyclonal
Isotype	IgG
Applications	WB, IHC-P, FCM
Reactivity	Human

Package
400 µl

Applications

Application Note

*Optimal dilutions/concentrations should be determined by the researcher.

Suggested dilution	Recommended dilution
WB	1:1000
IHC-P	1:50-1:100
FCM	1:10-1:50

Not tested in other applications.

Calculated MW 57 kDa. ([Note](#))

Properties

Form	Liquid
Buffer	PBS, 0.09% sodium azide.
Storage	Store as concentrated solution. Centrifuge briefly prior to opening vial. For short-term storage (1-2 weeks), store at 4°C. For long-term storage, aliquot and store at -20°C or below. Avoid multiple freeze-thaw cycles.
Concentration	Batch dependent (Please refer to the vial label for the specific concentration.)
Immunogen	KLH conjugated synthetic peptide between 446-477 amino acids from the C-terminal region of human CYP2A13.
Purification	Saturated Ammonium Sulfate (SAS) precipitation followed by dialysis against PBS.
Conjugation	Unconjugated

Note

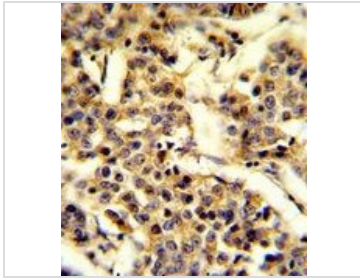
For laboratory research use only. Not for any clinical, therapeutic, or diagnostic use in humans or animals. Not for animal or human consumption.

Purchasers shall not, and agree not to enable third parties to, analyze, copy, reverse engineer or otherwise attempt to determine the structure or sequence of the product.



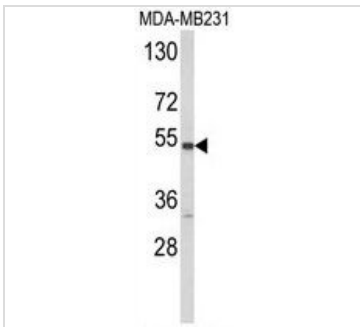
For full product information, images and publications, please visit our [website](#).

DATA IMAGES



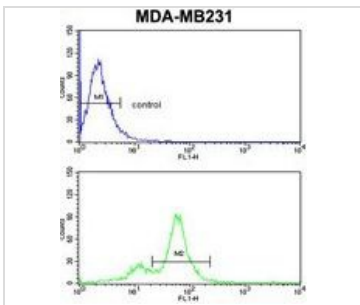
GTX81118 IHC-P Image

IHC-P analysis of human breast carcinoma using GTX81118 CYP2A13 antibody, C-term.



GTX81118 WB Image

WB analysis of MDA-MB231 cell lysate (35ug/lane) using GTX81118 CYP2A13 antibody, C-term.



GTX81118 FCM Image

FACS analysis of MDA-MB231 cells using GTX81118 CYP2A13 antibody, C-term.

Top histogram : negative control

Bottom histogram : MDA-MB231 cells



For full product information, images and publications, please visit our [website](#).