

## CYP2A13 antibody, C-term

Cat. No. GTX81118

<b>Host</b>	Rabbit
<b>Clonality</b>	Polyclonal
<b>Isotype</b>	IgG
<b>Applications</b>	WB, IHC-P, FCM
<b>Reactivity</b>	Human

Package  
400 µl

## Applications

## Application Note

\*Optimal dilutions/concentrations should be determined by the researcher.

Suggested dilution	Recommended dilution
WB	1:1000
IHC-P	1:50-1:100
FCM	1:10-1:50

Not tested in other applications.

**Calculated MW** 57 kDa. ([Note](#))

## Properties

**Form** Liquid

**Buffer** PBS, 0.09% sodium azide.

**Storage** Store as concentrated solution. Centrifuge briefly prior to opening vial. For short-term storage (1-2 weeks), store at 4°C. For long-term storage, aliquot and store at -20°C or below. Avoid multiple freeze-thaw cycles.

**Concentration** Batch dependent (Please refer to the vial label for the specific concentration.)

**Immunogen** KLH conjugated synthetic peptide between 446-477 amino acids from the C-terminal region of human CYP2A13.

**Purification** Saturated Ammonium Sulfate (SAS) precipitation followed by dialysis against PBS.

**Conjugation** Unconjugated

## Note

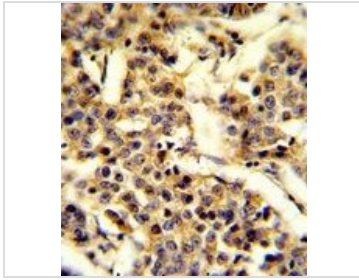
For laboratory research use only. Not for any clinical, therapeutic, or diagnostic use in humans or animals. Not for animal or human consumption.

Purchasers shall not, and agree not to enable third parties to, analyze, copy, reverse engineer or otherwise attempt to determine the structure or sequence of the product.



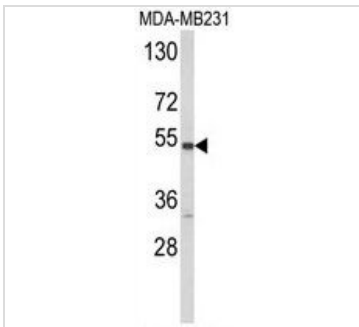
For full product information, images and publications, please visit our [website](#).

DATA IMAGES



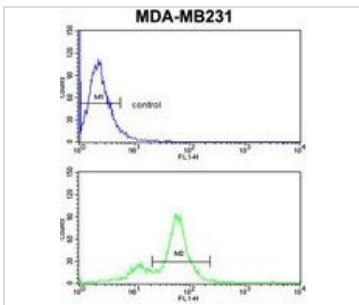
**GTX81118 IHC-P Image**

IHC-P analysis of human breast carcinoma using GTX81118 CYP2A13 antibody, C-term.



**GTX81118 WB Image**

WB analysis of MDA-MB231 cell lysate (35ug/lane) using GTX81118 CYP2A13 antibody, C-term.



**GTX81118 FCM Image**

FACS analysis of MDA-MB231 cells using GTX81118 CYP2A13 antibody, C-term.

Top histogram : negative control

Bottom histogram : MDA-MB231 cells



For full product information, images and publications, please visit our [website](#).