

## EHHADH antibody, C-term

Cat. No. GTX81126

<b>Host</b>	Rabbit
<b>Clonality</b>	Polyclonal
<b>Isotype</b>	IgG
<b>Applications</b>	WB, IHC-P, FCM
<b>Reactivity</b>	Human, Mouse, Rat

References ( 4 )

Package

400 µl

## Applications

## Application Note

\*Optimal dilutions/concentrations should be determined by the researcher.

Suggested dilution	Recommended dilution
WB	1:1000
IHC-P	1:10-1:50
FCM	1:10-1:50

Not tested in other applications.

**Calculated MW** 79 kDa. ( [Note](#) )

## Properties

<b>Form</b>	Liquid
<b>Buffer</b>	PBS
<b>Preservative</b>	0.09% Sodium azide
<b>Storage</b>	Store as concentrated solution. Centrifuge briefly prior to opening vial. For short-term storage (1-2 weeks), store at 4°C. For long-term storage, aliquot and store at -20°C or below. Avoid multiple freeze-thaw cycles.
<b>Concentration</b>	Batch dependent (Please refer to the vial label for the specific concentration.)
<b>Immunogen</b>	KLH conjugated synthetic peptide between 662-690 amino acids from the C-terminal region of human EHHADH.
<b>Purification</b>	Protein A purified, followed by peptide affinity purification.
<b>Conjugation</b>	Unconjugated

## Note

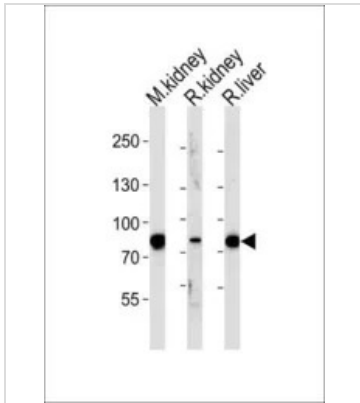
For laboratory research use only. Not for any clinical, therapeutic, or diagnostic use in humans or animals. Not for animal or human consumption.

Purchasers shall not, and agree not to enable third parties to, analyze, copy, reverse engineer or otherwise attempt to determine the structure or sequence of the product.



For full product information, images and publications, please visit our [website](#).

DATA IMAGES

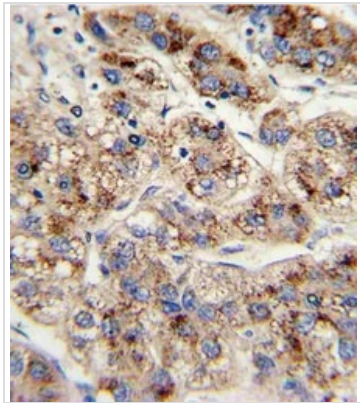


**GTX81126 WB Image**

WB analysis of mouse kidney, rat kidney and liver tissue using GTX81126 EHHADH antibody, C-term.

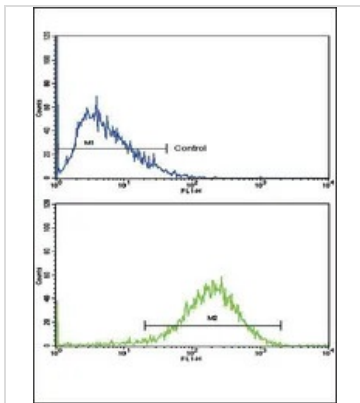
Loading : 35ug per lane

Dilution : 1:1000



**GTX81126 IHC-P Image**

IHC-P analysis of human hepatocarcinoma using GTX81126 EHHADH antibody, C-term.



**GTX81126 FCM Image**

FACS analysis of HepG2 cells using GTX81126 EHHADH antibody, C-term.

Top histogram : negative control

Bottom histogram : HepG2 cells



For full product information, images and publications, please visit our [website](#).