

NKG2C antibody, N-term

Cat. No. GTX81130

| | |
|--------------|----------------|
| Host | Rabbit |
| Clonality | Polyclonal |
| Isotype | IgG |
| Applications | WB, IHC-P, FCM |
| Reactivity | Human |

Package
400 µl

Applications

Application Note

*Optimal dilutions/concentrations should be determined by the researcher.

| Suggested dilution | Recommended dilution |
|--------------------|----------------------|
| WB | 1:1000 |
| IHC-P | 1:50-1:100 |
| FCM | 1:10-1:50 |

Not tested in other applications.

Calculated MW 26 kDa. ([Note](#))

Properties

| | |
|---------------|--|
| Form | Liquid |
| Buffer | PBS |
| Preservative | 0.09% Sodium azide |
| Storage | Store as concentrated solution. Centrifuge briefly prior to opening vial. For short-term storage (1-2 weeks), store at 4°C. For long-term storage, aliquot and store at -20°C or below. Avoid multiple freeze-thaw cycles. |
| Concentration | Batch dependent (Please refer to the vial label for the specific concentration.) |
| Immunogen | KLH conjugated synthetic peptide between 1-30 amino acids from the N-terminal region of human KLRC2. |
| Purification | Protein A purified, followed by peptide affinity purification. |
| Conjugation | Unconjugated |

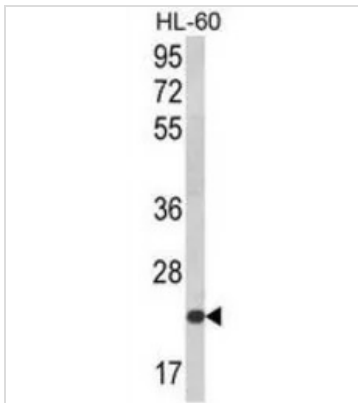
Note

For laboratory research use only. Not for any clinical, therapeutic, or diagnostic use in humans or animals. Not for animal or human consumption.

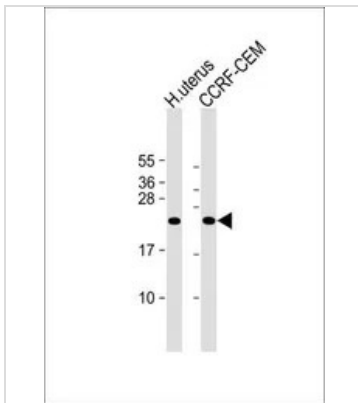
Purchasers shall not, and agree not to enable third parties to, analyze, copy, reverse engineer or otherwise attempt to determine the structure or sequence of the product.



For full product information, images and publications, please visit our [website](#).

DATA IMAGES

GTX81130 WB Image

WB analysis of HL-60 cell lysate (35ug/lane) using GTX81130 NKG2C antibody, N-term.


GTX81130 WB Image

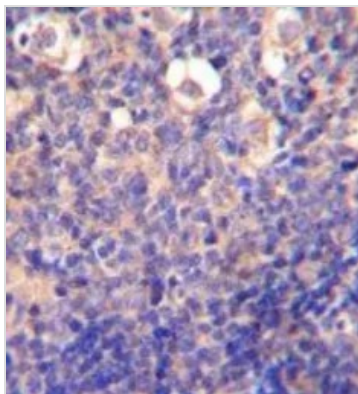
WB analysis of various samples using GTX81130 NKG2C antibody, N-term.

Lane 1: human uterus lysate

Lane 2: CCRF-CEM whole cell lysate

Loading : 20 µg per lane

Dilution : 1:2000


GTX81130 IHC-P Image

IHC-P analysis of human tonsil using GTX81130 NKG2C antibody, N-term.



For full product information, images and publications, please visit our [website](https://www.genetex.com).