

# HLA-B antibody, N-term

**Cat. No. GTX81138**

<b>Host</b>	Rabbit
<b>Clonality</b>	Polyclonal
<b>Isotype</b>	IgG
<b>Applications</b>	WB, FCM
<b>Reactivity</b>	Human

**Package**  
400 µl

## Applications

### Application Note

\*Optimal dilutions/concentrations should be determined by the researcher.

Suggested dilution	Recommended dilution
WB	1:1000
FCM	1:10-1:50

Not tested in other applications.

## Properties

<b>Form</b>	Liquid
<b>Buffer</b>	PBS
<b>Preservative</b>	0.09% Sodium azide
<b>Storage</b>	Store as concentrated solution. Centrifuge briefly prior to opening vial. For short-term storage (1-2 weeks), store at 4°C. For long-term storage, aliquot and store at -20°C or below. Avoid multiple freeze-thaw cycles.
<b>Concentration</b>	Batch dependent (Please refer to the vial label for the specific concentration.)
<b>Immunogen</b>	KLH conjugated synthetic peptide between 62-90 amino acids from the N-terminal region of human HLA-B.
<b>Purification</b>	Protein A purified, followed by peptide affinity purification.
<b>Conjugation</b>	Unconjugated

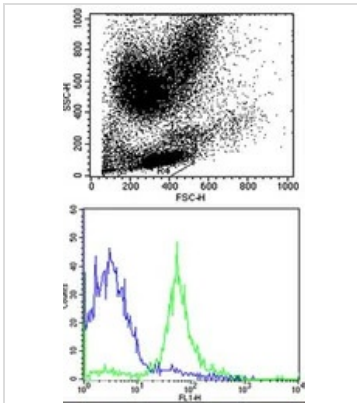
### Note

For laboratory research use only. Not for any clinical, therapeutic, or diagnostic use in humans or animals. Not for animal or human consumption.

Purchasers shall not, and agree not to enable third parties to, analyze, copy, reverse engineer or otherwise attempt to determine the structure or sequence of the product.



For full product information, images and publications, please visit our [website](#).

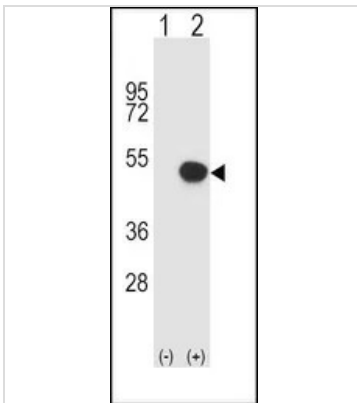
**DATA IMAGES**

**GTX81138 FCM Image**

FACS analysis of human peripheral blood lymphocytes using GTX81138 HLA-B antibody, N-term.

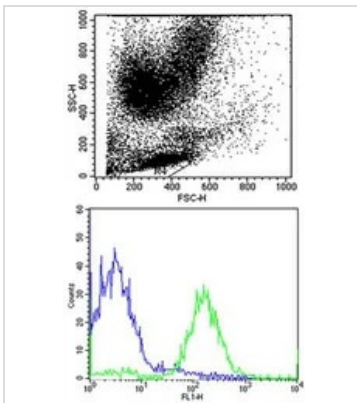
Green : HLA-B

Blue : Isotype control

Dilution : 1:25


**GTX81138 WB Image**

WB analysis of 293 cell lysate (2 ug/lane) either nontransfected (Lane 1) or transiently transfected with the HLA-B (Lane 2) using GTX81138 HLA-B antibody, N-term.


**GTX81138 FCM Image**

FACS analysis of human peripheral blood lymphocytes using GTX81138 HLA-B antibody, N-term.

Green : HLA-B

Blue : Isotype control

Dilution : 1:25



For full product information, images and publications, please visit our [website](http://www.genetex.com).