

CXCL8 / IL8 antibody, C-term

Cat. No. GTX81140

Host	Rabbit
Clonality	Polyclonal
Isotype	IgG
Applications	WB, ICC/IF, IHC-P, FCM
Reactivity	Human

Package
400 µl

Applications

Application Note

*Optimal dilutions/concentrations should be determined by the researcher.

Suggested dilution	Recommended dilution
WB	1:1000
ICC/IF	1:10-1:50
IHC-P	1:10-1:50
FCM	1:10-1:50

Not tested in other applications.

Calculated MW 11 kDa. ([Note](#))

Properties

Form	Liquid
Buffer	PBS
Preservative	0.09% Sodium azide
Storage	Store as concentrated solution. Centrifuge briefly prior to opening vial. For short-term storage (1-2 weeks), store at 4°C. For long-term storage, aliquot and store at -20°C or below. Avoid multiple freeze-thaw cycles.
Concentration	Batch dependent (Please refer to the vial label for the specific concentration.)
Immunogen	KLH conjugated synthetic peptide between 72-99 amino acids from the C-terminal region of human IL8.
Purification	Saturated Ammonium Sulfate (SAS) precipitation followed by dialysis against PBS.
Conjugation	Unconjugated

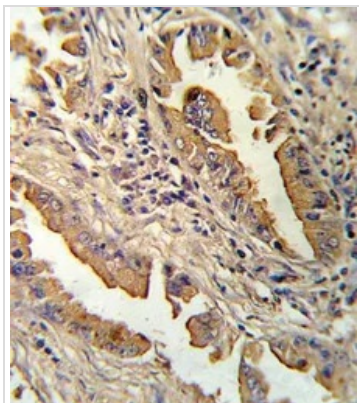
Note

For laboratory research use only. Not for any clinical, therapeutic, or diagnostic use in humans or animals. Not for animal or human consumption.

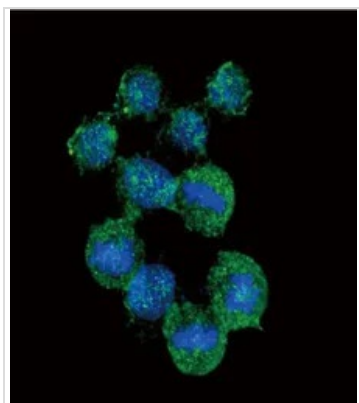
Purchasers shall not, and agree not to enable third parties to, analyze, copy, reverse engineer or otherwise attempt to determine the structure or sequence of the product.



For full product information, images and publications, please visit our [website](#).

DATA IMAGES

GTX81140 IHC-P Image

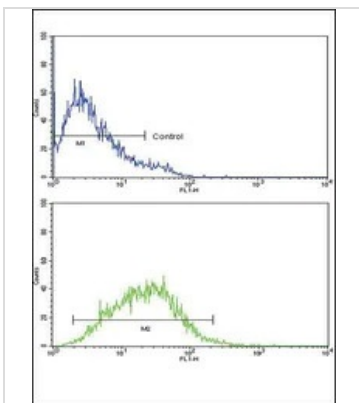
IHC-P analysis of human lung carcinoma using GTX81140 CXCL8 / IL8 antibody, C-term.


GTX81140 ICC/IF Image

ICC/IF analysis of HeLa cells using GTX81140 CXCL8 / IL8 antibody, C-term.

Green : CXCL8 / IL8

Blue : DAPI


GTX81140 FCM Image

FACS analysis of CEM cells using GTX81140 CXCL8 / IL8 antibody, C-term.

Top histogram : negative control

Bottom histogram : CEM cells



For full product information, images and publications, please visit our [website](https://www.genetex.com).