

Wnt5b antibody, Internal

Cat. No. GTX81146

Host	Rabbit
Clonality	Polyclonal
Isotype	IgG
Applications	WB, IHC-P, FCM
Reactivity	Human, Mouse

Package
400 µl

Applications

Application Note

*Optimal dilutions/concentrations should be determined by the researcher.

Suggested dilution	Recommended dilution
WB	1:1000
IHC-P	1:10-1:50
FCM	1:10-1:50

Not tested in other applications.

Calculated MW 40 kDa. ([Note](#))

Properties

Form	Liquid
Buffer	PBS
Preservative	0.09% Sodium azide
Storage	Store as concentrated solution. Centrifuge briefly prior to opening vial. For short-term storage (1-2 weeks), store at 4°C. For long-term storage, aliquot and store at -20°C or below. Avoid multiple freeze-thaw cycles.
Concentration	Batch dependent (Please refer to the vial label for the specific concentration.)
Immunogen	KLH conjugated synthetic peptide between 153-182 amino acids from the Central region of human WNT5B.
Purification	Protein A purified, followed by peptide affinity purification.
Conjugation	Unconjugated

Note

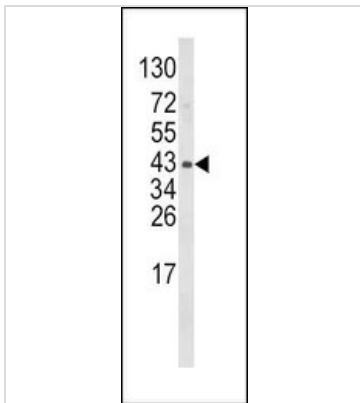
For laboratory research use only. Not for any clinical, therapeutic, or diagnostic use in humans or animals. Not for animal or human consumption.

Purchasers shall not, and agree not to enable third parties to, analyze, copy, reverse engineer or otherwise attempt to determine the structure or sequence of the product.



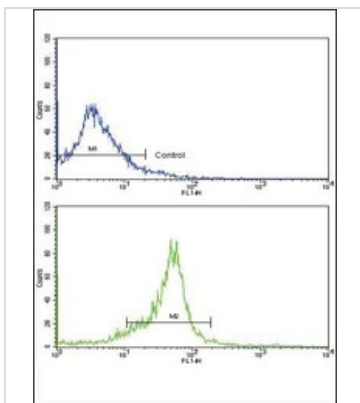
For full product information, images and publications, please visit our [website](#).

DATA IMAGES



GTx81146 WB Image

WB analysis of mouse bladder tissue lysate (35ug/lane) using GTx81146 WNT5B antibody, Internal.

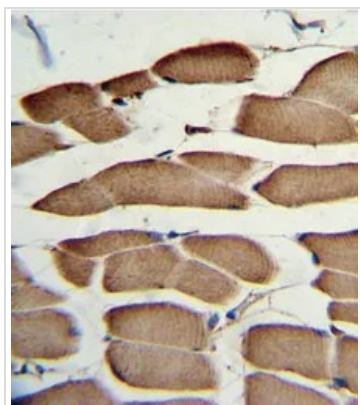


GTx81146 FCM Image

FACS analysis of WiDr cells using GTx81146 WNT5B antibody, Internal.

Top histogram : negative control

Bottom histogram : WiDr cells



GTx81146 IHC-P Image

IHC-P analysis of human skeletal muscle using GTx81146 WNT5B antibody, Internal.



For full product information, images and publications, please visit our [website](https://www.genetex.com).