

VTI1A antibody, C-term

Cat. No. GTX81147

Host	Rabbit
Clonality	Polyclonal
Isotype	IgG
Applications	WB, IHC-P, FCM
Reactivity	Human

Package
400 µl

Applications

Application Note

*Optimal dilutions/concentrations should be determined by the researcher.

Suggested dilution	Recommended dilution
WB	1:1000
IHC-P	1:50-1:100
FCM	1:10-1:50

Not tested in other applications.

Calculated MW 25 kDa. ([Note](#))

Properties

Form	Liquid
Buffer	PBS
Preservative	0.09% Sodium azide
Storage	Store as concentrated solution. Centrifuge briefly prior to opening vial. For short-term storage (1-2 weeks), store at 4°C. For long-term storage, aliquot and store at -20°C or below. Avoid multiple freeze-thaw cycles.
Concentration	Batch dependent (Please refer to the vial label for the specific concentration.)
Immunogen	KLH conjugated synthetic peptide between 140-169 amino acids from the C-terminal region of human VTI1A.
Purification	Protein A purified, followed by peptide affinity purification.
Conjugation	Unconjugated

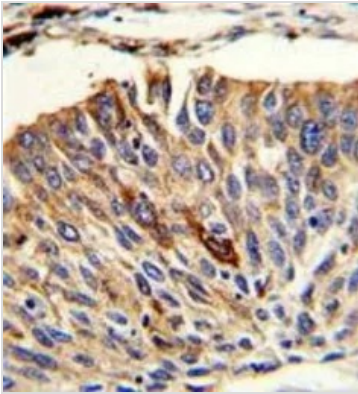
Note

For laboratory research use only. Not for any clinical, therapeutic, or diagnostic use in humans or animals. Not for animal or human consumption.

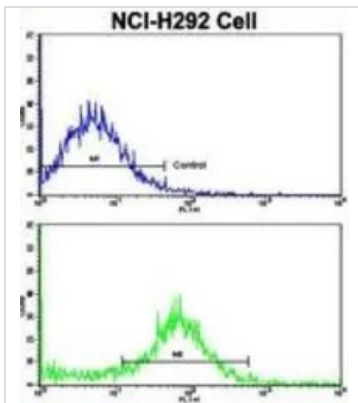
Purchasers shall not, and agree not to enable third parties to, analyze, copy, reverse engineer or otherwise attempt to determine the structure or sequence of the product.



For full product information, images and publications, please visit our [website](#).

DATA IMAGES

GTX81147 IHC-P Image

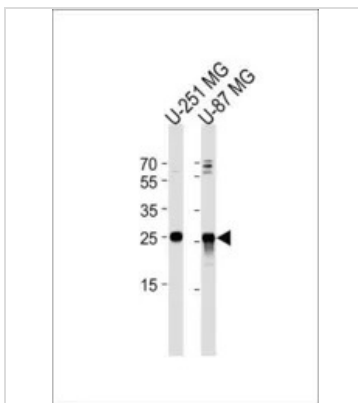
IHC-P analysis of human lung carcinoma using GTX81147 VTI1A antibody, C-term.


GTX81147 FCM Image

FACS analysis of NCI-H292 cells using GTX81147 VTI1A antibody, C-term.

Top histogram : negative control

Bottom histogram : NCI-H292 cells


GTX81147 WB Image

WB analysis of U-251 MG, U-87 MG cell using GTX81147 VTI1A antibody, C-term.

Loading : 35ug per lane

Dilution : 1:1000



For full product information, images and publications, please visit our [website](http://www.genetex.com).