

Src (phospho Tyr416) antibody

Cat. No. GTX81151

Host	Rabbit
Clonality	Polyclonal
Isotype	IgG
Applications	WB, ICC/IF, IHC-P, Double immunodiffusion, IHC
Reactivity	Human, Mouse

References (4)

Package

400 µl

Applications

Application Note

*Optimal dilutions/concentrations should be determined by the researcher.

Suggested dilution	Recommended dilution
WB	1:1000
ICC/IF	1:10-1:50
IHC-P	1:50-1:100
Double immunodiffusion	Assay dependent
IHC	Assay dependent

Not tested in other applications.

Calculated MW 60 kDa. ([Note](#))

Product Note Based on sequence homology, this antibody may cross with other Src family members such as YES1 , FYN proteins when phosphorylated at the equivalent sites.

Properties

Form	Liquid
Buffer	PBS, 0.09% sodium azide.
Storage	Store as concentrated solution. Centrifuge briefly prior to opening vial. For short-term storage (1-2 weeks), store at 4°C. For long-term storage, aliquot and store at -20°C or below. Avoid multiple freeze-thaw cycles.
Concentration	Batch dependent (Please refer to the vial label for the specific concentration.)
Immunogen	KLH conjugated synthetic peptide between 397-424 amino acids from human SRC. The Tyr419 of human Src(with Met) is equivalent to Tyr416 of chicken Src(without Met).
Purification	Protein A purified, followed by peptide affinity purification.
Conjugation	Unconjugated



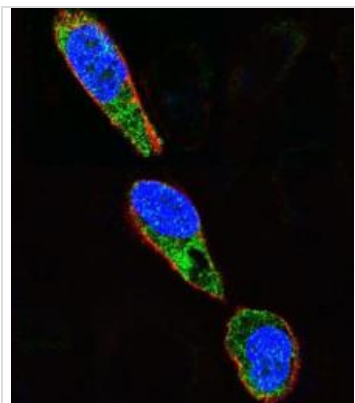
For full product information, images and publications, please visit our [website](#).

For laboratory research use only. Not for any clinical, therapeutic, or diagnostic use in humans or animals. Not for animal or human consumption.

Note

Purchasers shall not, and agree not to enable third parties to, analyze, copy, reverse engineer or otherwise attempt to determine the structure or sequence of the product.

DATA IMAGES



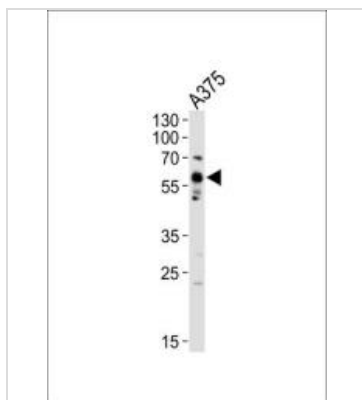
GTx81151 ICC/IF Image

ICC/IF analysis of A375 cells using GTx81151 Src (phospho Tyr416) antibody.

Green : SRC(phospho Tyr419)

Red : Actin filament

Blue : cell nucleus

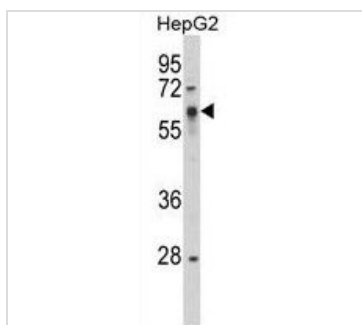


GTx81151 WB Image

WB analysis of A375 cell lysate using GTx81151 Src (phospho Tyr416) antibody.

Loading : 20ug

Dilution : 1:1000



GTx81151 WB Image

WB analysis of HepG2 cell lysate (35ug/lane) using GTx81151 Src (phospho Tyr416) antibody.



For full product information, images and publications, please visit our [website](#).