

# Src (phospho Tyr416) antibody

**Cat. No. GTX81151**

<b>Host</b>	Rabbit
<b>Clonality</b>	Polyclonal
<b>Isotype</b>	IgG
<b>Applications</b>	WB, ICC/IF, IHC-P, Double immunodiffusion, IHC
<b>Reactivity</b>	Human, Mouse

References ( 4 )

Package

400 µl

## Applications

### Application Note

\*Optimal dilutions/concentrations should be determined by the researcher.

Suggested dilution	Recommended dilution
WB	1:1000
ICC/IF	1:10-1:50
IHC-P	1:50-1:100
Double immunodiffusion	Assay dependent
IHC	Assay dependent

Not tested in other applications.

**Calculated MW** 60 kDa. ( [Note](#) )

**Product Note** Based on sequence homology, this antibody may cross with other Src family members such as YES1 , FYN proteins when phosphorylated at the equivalent sites.

## Properties

<b>Form</b>	Liquid
<b>Buffer</b>	PBS, 0.09% sodium azide.
<b>Storage</b>	Store as concentrated solution. Centrifuge briefly prior to opening vial. For short-term storage (1-2 weeks), store at 4°C. For long-term storage, aliquot and store at -20°C or below. Avoid multiple freeze-thaw cycles.
<b>Concentration</b>	Batch dependent (Please refer to the vial label for the specific concentration.)
<b>Immunogen</b>	KLH conjugated synthetic peptide between 397-424 amino acids from human SRC. The Tyr419 of human Src(with Met) is equivalent to Tyr416 of chicken Src(without Met).
<b>Purification</b>	Protein A purified, followed by peptide affinity purification.
<b>Conjugation</b>	Unconjugated



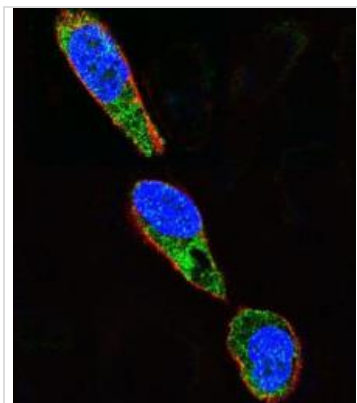
For full product information, images and publications, please visit our [website](#).

For laboratory research use only. Not for any clinical, therapeutic, or diagnostic use in humans or animals. Not for animal or human consumption.

## Note

Purchasers shall not, and agree not to enable third parties to, analyze, copy, reverse engineer or otherwise attempt to determine the structure or sequence of the product.

## DATA IMAGES



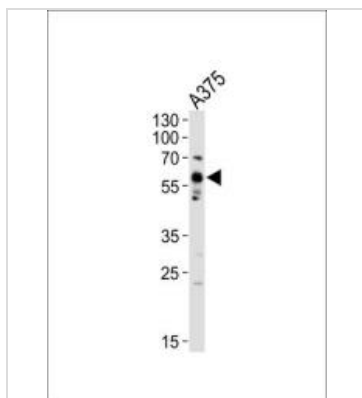
### GTx81151 ICC/IF Image

ICC/IF analysis of A375 cells using GTx81151 Src (phospho Tyr416) antibody.

Green : SRC(phospho Tyr419)

Red : Actin filament

Blue : cell nucleus

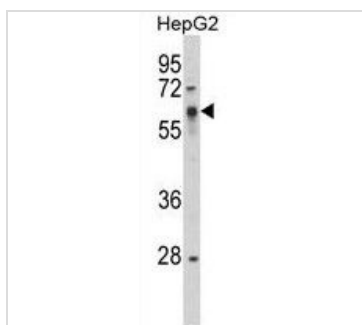


### GTx81151 WB Image

WB analysis of A375 cell lysate using GTx81151 Src (phospho Tyr416) antibody.

Loading : 20ug

Dilution : 1:1000



### GTx81151 WB Image

WB analysis of HepG2 cell lysate (35ug/lane) using GTx81151 Src (phospho Tyr416) antibody.



For full product information, images and publications, please visit our [website](#).