

Bim antibody, Internal

Cat. No. GTX81177

Host	Rabbit
Clonality	Polyclonal
Isotype	IgG
Application	WB, IHC-P, FACS
Reactivity	Human

Package
400 µl

APPLICATION

Application Note

*Optimal dilutions/concentrations should be determined by the researcher.

Suggested dilution	Recommended dilution
WB	1:1000
IHC-P	1:10-1:50
FACS	1:10-1:50

Not tested in other applications.

Calculated MW 22 kDa. ([Note](#))

PROPERTIES

Form	Liquid
Buffer	PBS
Preservative	0.09% Sodium azide
Storage	Store as concentrated solution. Centrifuge briefly prior to opening vial. For short-term storage (1-2 weeks), store at 4°C. For long-term storage, aliquot and store at -20°C or below. Avoid multiple freeze-thaw cycles.
Concentration	Batch dependent (Please refer to the vial label for the specific concentration.)
Immunogen	KLH conjugated synthetic peptide between 134-160 amino acids from the Central region of human BCL2L11.
Purification	Protein A purified, followed by peptide affinity purification.
Conjugation	Unconjugated

Note

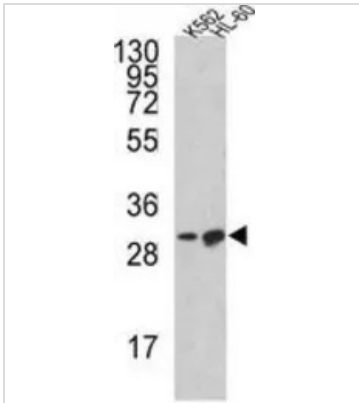
For laboratory research use only. Not for any clinical, therapeutic, or diagnostic use in humans or animals. Not for animal or human consumption.

Purchasers shall not, and agree not to enable third parties to, analyze, copy, reverse engineer or otherwise attempt to determine the structure or sequence of the product.



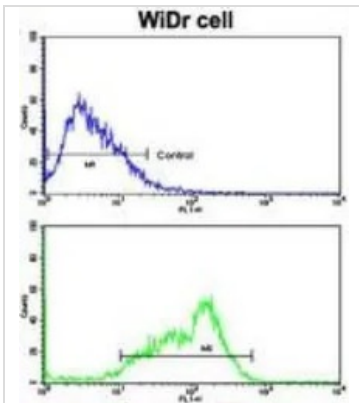
For full product information, images and publications, please visit our [website](#).

DATA IMAGES



GTX81177 WB Image

WB analysis of K562, HL-60 cell lysate (35ug/lane) using GTX81177 Bim antibody, Internal.

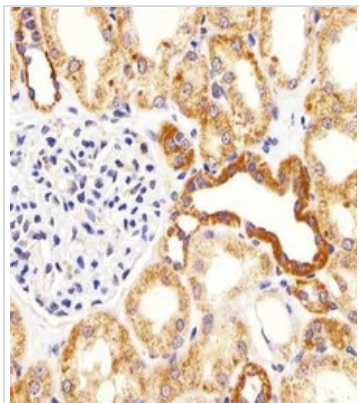


GTX81177 FACS Image

FACS analysis of WiDr cells using GTX81177 Bim antibody, Internal.

Top histogram : negative control

Bottom histogram : WiDr cells



GTX81177 IHC-P Image

IHC-P analysis of human kidney tissue using GTX81177 Bim antibody, Internal.

Dilution : 1:25



For full product information, images and publications, please visit our [website](https://www.genetex.com).