

Calmodulin antibody, C-term

Cat. No. GTX81180

Host	Rabbit
Clonality	Polyclonal
Isotype	IgG
Applications	WB, ICC/IF, IHC-P, FCM
Reactivity	Human

Package
400 µl

Applications

Application Note

*Optimal dilutions/concentrations should be determined by the researcher.

Suggested dilution	Recommended dilution
WB	1:1000
ICC/IF	1:10-1:50
IHC-P	1:50-1:100
FCM	1:10-1:50

Not tested in other applications.

Properties

Form	Liquid
Buffer	PBS
Preservative	0.09% Sodium azide
Storage	Store as concentrated solution. Centrifuge briefly prior to opening vial. For short-term storage (1-2 weeks), store at 4°C. For long-term storage, aliquot and store at -20°C or below. Avoid multiple freeze-thaw cycles.
Concentration	Batch dependent (Please refer to the vial label for the specific concentration.)
Immunogen	KLH conjugated synthetic peptide between 107-132 amino acids from the C-terminal region of human CALM1.
Purification	Protein A purified, followed by peptide affinity purification.
Conjugation	Unconjugated

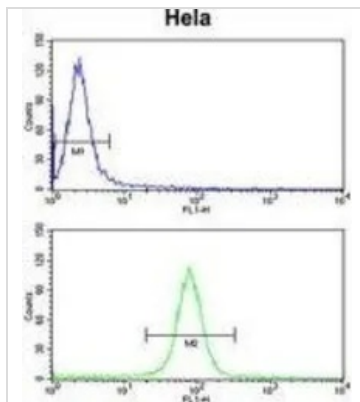
Note

For laboratory research use only. Not for any clinical, therapeutic, or diagnostic use in humans or animals. Not for animal or human consumption.

Purchasers shall not, and agree not to enable third parties to, analyze, copy, reverse engineer or otherwise attempt to determine the structure or sequence of the product.



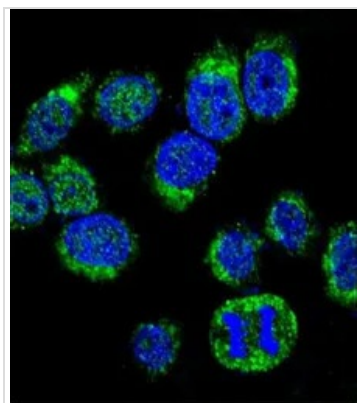
For full product information, images and publications, please visit our [website](#).

DATA IMAGES

GTX81180 FCM Image

FACS analysis of HeLa cells using GTX81180 Calmodulin antibody, C-term.

Top histogram : negative control

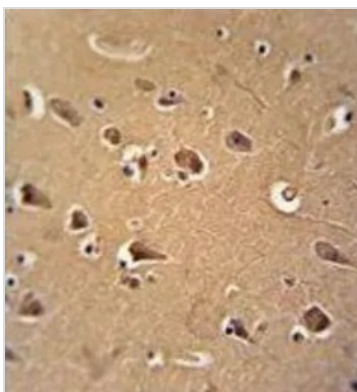
Bottom histogram : HeLa cells


GTX81180 ICC/IF Image

ICC/IF analysis of HeLa cells using GTX81180 Calmodulin antibody, C-term.

Green : Calmodulin

Blue : DAPI


GTX81180 IHC-P Image

IHC-P analysis of human brain tissue using GTX81180 Calmodulin antibody, C-term.



For full product information, images and publications, please visit our [website](https://www.genetex.com).