

IL1 beta antibody, Internal

Cat. No. GTX81192

Host	Rabbit
Clonality	Polyclonal
Isotype	IgG
Applications	WB, IHC-P, FCM
Reactivity	Human, Mouse

Package
400 µl

Applications

Application Note

*Optimal dilutions/concentrations should be determined by the researcher.

Suggested dilution	Recommended dilution
WB	1:1000
IHC-P	1:10-1:50
FCM	1:25

Not tested in other applications.

Calculated MW 31 kDa. ([Note](#))

Properties

Form	Liquid
Buffer	PBS
Preservative	0.09% Sodium azide
Storage	Store as concentrated solution. Centrifuge briefly prior to opening vial. For short-term storage (1-2 weeks), store at 4°C. For long-term storage, aliquot and store at -20°C or below. Avoid multiple freeze-thaw cycles.
Concentration	Batch dependent (Please refer to the vial label for the specific concentration.)
Immunogen	KLH conjugated synthetic peptide between 148-174 amino acids of human IL1B.
Purification	Protein A purified, followed by peptide affinity purification.
Conjugation	Unconjugated

Note

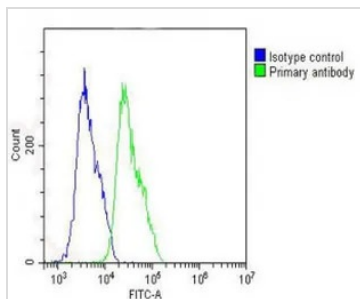
For laboratory research use only. Not for any clinical, therapeutic, or diagnostic use in humans or animals. Not for animal or human consumption.

Purchasers shall not, and agree not to enable third parties to, analyze, copy, reverse engineer or otherwise attempt to determine the structure or sequence of the product.



For full product information, images and publications, please visit our [website](#).

DATA IMAGES



GTx81192 FCM Image

FACS analysis of MCF-7 cells using GTx81192 IL1 beta antibody, Internal.

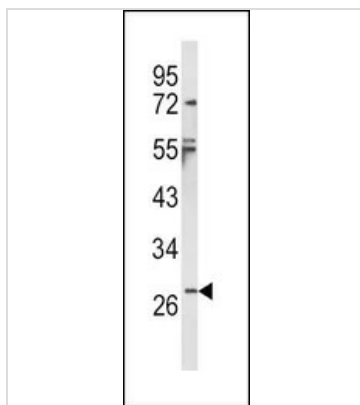
Green : IL1 beta

Blue : Isotype control

Fixation : 2% paraformaldehyde (PFA) (10 min)

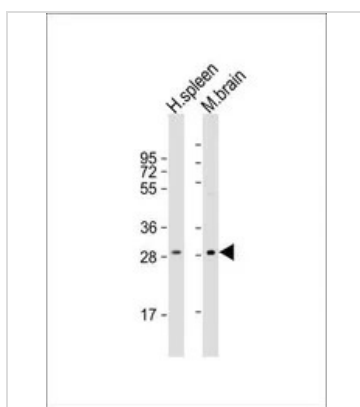
Permeabilization : 90% methanol (10 min)

Dilution : 1:25



GTx81192 WB Image

WB analysis of NCI-H460 cell lysate (35ug/lane) using GTx81192 IL1 beta antibody, Internal.



GTx81192 WB Image

WB analysis of various samples using GTx81192 IL1 beta antibody, Internal.

Lane 1: human spleen lysate

Lane 2: mouse brain lysate

Loading : 20 µg per lane

Dilution : 1:2000



For full product information, images and publications, please visit our [website](#).