

PEA15 antibody, C-term

Cat. No. GTX81197

Host	Rabbit
Clonality	Polyclonal
Isotype	IgG
Applications	WB, IHC-P, FCM
Reactivity	Human, Mouse

References (1)

Package

400 µl

Applications

Application Note

*Optimal dilutions/concentrations should be determined by the researcher.

Suggested dilution	Recommended dilution
WB	1:1000
IHC-P	1:50-1:100
FCM	1:10-1:50

Not tested in other applications.

Calculated MW 15 kDa. ([Note](#))

Properties

Form	Liquid
Buffer	PBS
Preservative	0.09% Sodium azide
Storage	Store as concentrated solution. Centrifuge briefly prior to opening vial. For short-term storage (1-2 weeks), store at 4°C. For long-term storage, aliquot and store at -20°C or below. Avoid multiple freeze-thaw cycles.
Concentration	Batch dependent (Please refer to the vial label for the specific concentration.)
Immunogen	KLH conjugated synthetic peptide between 86-115 amino acids from the C-terminal region of human PEA-15.
Purification	Protein A purified, followed by peptide affinity purification.
Conjugation	Unconjugated

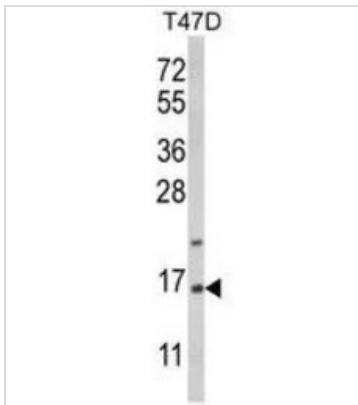
Note

For laboratory research use only. Not for any clinical, therapeutic, or diagnostic use in humans or animals. Not for animal or human consumption.

Purchasers shall not, and agree not to enable third parties to, analyze, copy, reverse engineer or otherwise attempt to determine the structure or sequence of the product.

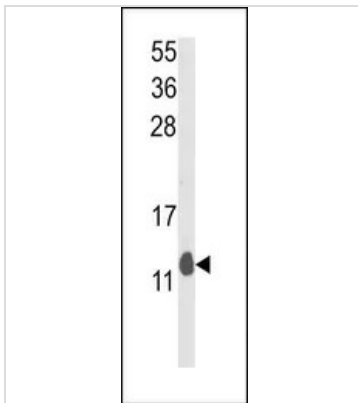
For full product information, images and publications, please visit our [website](#).

DATA IMAGES



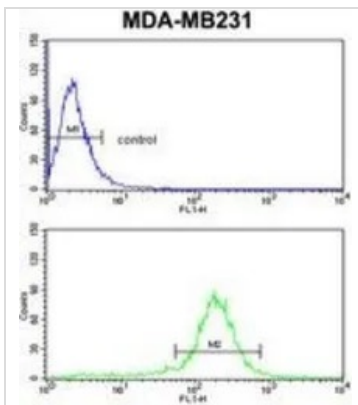
GTX81197 WB Image

WB analysis of T47D cell lysate (35ug/lane) using GTX81197 PEA15 antibody, C-term.



GTX81197 WB Image

WB analysis of mouse lung tissue lysate (35ug/lane) using GTX81197 PEA15 antibody, C-term.



GTX81197 FCM Image

FACS analysis of MDA-MB231 cells using GTX81197 PEA15 antibody, C-term.

Top histogram : negative control

Bottom histogram : MDA-MB231 cells



For full product information, images and publications, please visit our [website](https://www.genetex.com).