

SLC11A1 antibody, Internal

Cat. No. GTX81205

Host	Rabbit
Clonality	Polyclonal
Isotype	IgG
Applications	WB
Reactivity	Human

Package
400 µl

Applications

Application Note

*Optimal dilutions/concentrations should be determined by the researcher.

Suggested dilution	Recommended dilution
WB	1:1000

Not tested in other applications.

Calculated MW 60 kDa. ([Note](#))

Properties

Form	Liquid
Buffer	PBS
Preservative	0.09% Sodium azide
Storage	Store as concentrated solution. Centrifuge briefly prior to opening vial. For short-term storage (1-2 weeks), store at 4°C. For long-term storage, aliquot and store at -20°C or below. Avoid multiple freeze-thaw cycles.
Concentration	Batch dependent (Please refer to the vial label for the specific concentration.)
Immunogen	KLH conjugated synthetic peptide between 250-276 amino acids from the Central region of human SLC11A1.
Purification	Protein A purified, followed by peptide affinity purification.
Conjugation	Unconjugated

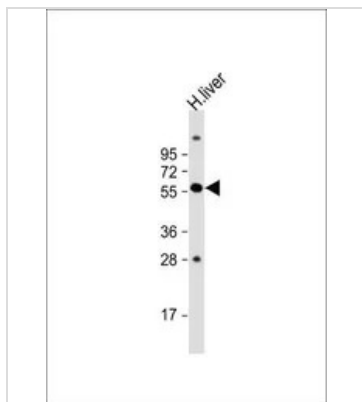
Note

For laboratory research use only. Not for any clinical, therapeutic, or diagnostic use in humans or animals. Not for animal or human consumption.

Purchasers shall not, and agree not to enable third parties to, analyze, copy, reverse engineer or otherwise attempt to determine the structure or sequence of the product.



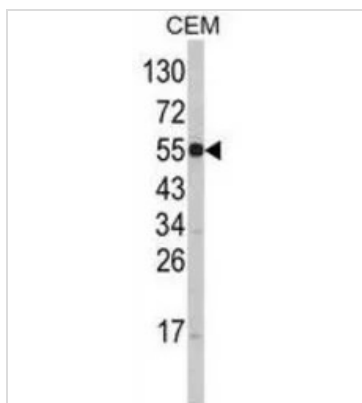
For full product information, images and publications, please visit our [website](#).

DATA IMAGES

GTX81205 WB Image

WB analysis of human liver lysate using GTX81205 SLC11A1 antibody, Internal.

Loading : 20 µg per lane

Dilution : 1:1000


GTX81205 WB Image

WB analysis of CEM cell lysate (35ug/lane) using GTX81205 SLC11A1 antibody, Internal.



For full product information, images and publications, please visit our [website](https://www.genetex.com).