

CYP1A1 antibody, Internal

Cat. No. GTX81231

Host	Rabbit
Clonality	Polyclonal
Isotype	IgG
Application	WB, ICC/IF, IHC-P
Reactivity	Human, Mouse

Package
400 µl

APPLICATION

Application Note

*Optimal dilutions/concentrations should be determined by the researcher.

Suggested dilution	Recommended dilution
WB	1:1000
ICC/IF	1:10-1:50
IHC-P	1:10-1:50

Not tested in other applications.

Calculated MW 58 kDa. ([Note](#))

PROPERTIES

Form	Liquid
Buffer	PBS
Preservative	0.09% Sodium azide
Storage	Store as concentrated solution. Centrifuge briefly prior to opening vial. For short-term storage (1-2 weeks), store at 4°C. For long-term storage, aliquot and store at -20°C or below. Avoid multiple freeze-thaw cycles.
Concentration	Batch dependent (Please refer to the vial label for the specific concentration.)
Immunogen	KLH conjugated synthetic peptide between 252-280 amino acids from the Central region of human CYP1A1.
Purification	Saturated Ammonium Sulfate (SAS) precipitation followed by dialysis against PBS.
Conjugation	Unconjugated

Note

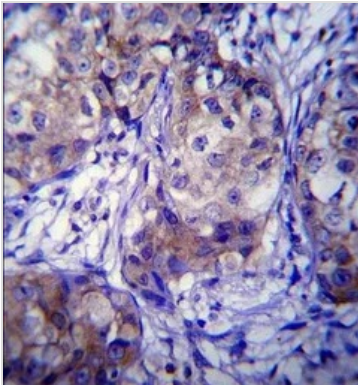
For laboratory research use only. Not for any clinical, therapeutic, or diagnostic use in humans or animals. Not for animal or human consumption.

Purchasers shall not, and agree not to enable third parties to, analyze, copy, reverse engineer or otherwise attempt to determine the structure or sequence of the product.



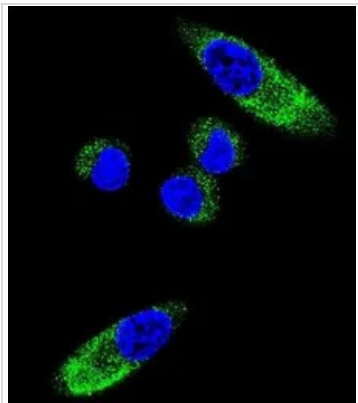
For full product information, images and publications, please visit our [website](#).

DATA IMAGES



GTX81231 IHC-P Image

IHC-P analysis of human breast carcinoma using GTX81231 CYP1A1 antibody, Internal.

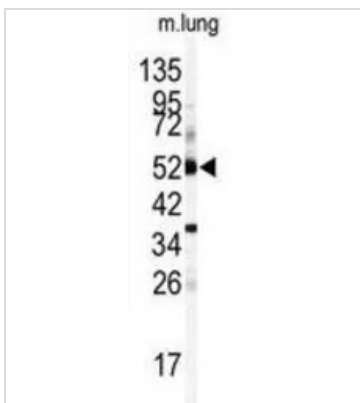


GTX81231 ICC/IF Image

ICC/IF analysis of MDA-MB231 cells using GTX81231 CYP1A1 antibody, Internal.

Green : CYP1A1

Blue : DAPI



GTX81231 WB Image

WB analysis of mouse lung tissue lysate (35ug/lane) using GTX81231 CYP1A1 antibody, Internal.



For full product information, images and publications, please visit our [website](#).