

TrkA antibody

Cat. No. GTX81329

Host	Rabbit
Clonality	Polyclonal
Isotype	IgG
Applications	WB, ICC/IF, FCM
Reactivity	Human, Mouse

Package
400 µl

Applications

Application Note

*Optimal dilutions/concentrations should be determined by the researcher.

Suggested dilution	Recommended dilution
WB	1:1000
ICC/IF	1:10-1:50
FCM	1:10-1:50

Not tested in other applications.

Calculated MW 87 kDa. ([Note](#))

Properties

Form	Liquid
Buffer	PBS
Preservative	0.09% Sodium azide
Storage	Store as concentrated solution. Centrifuge briefly prior to opening vial. For short-term storage (1-2 weeks), store at 4°C. For long-term storage, aliquot and store at -20°C or below. Avoid multiple freeze-thaw cycles.
Concentration	Batch dependent (Please refer to the vial label for the specific concentration.)
Immunogen	This TrkA antibody is generated from rabbits immunized with TrkA his fusion protein
Purification	Saturated Ammonium Sulfate (SAS) precipitation followed by dialysis against PBS.
Conjugation	Unconjugated

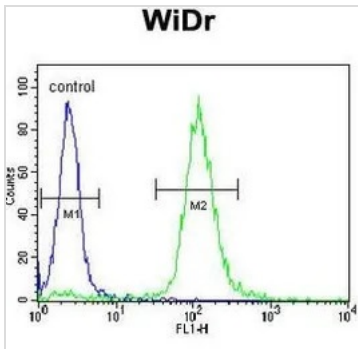
Note

For laboratory research use only. Not for any clinical, therapeutic, or diagnostic use in humans or animals. Not for animal or human consumption.

Purchasers shall not, and agree not to enable third parties to, analyze, copy, reverse engineer or otherwise attempt to determine the structure or sequence of the product.



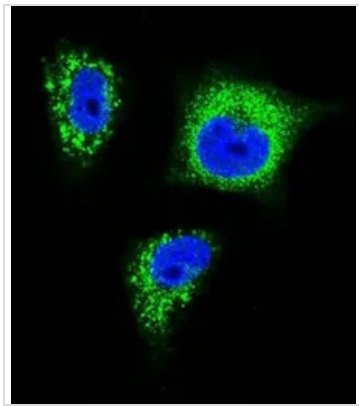
For full product information, images and publications, please visit our [website](#).

DATA IMAGES

GTX81329 FCM Image

FACS analysis of WiDr cells using GTX81329 TrkA antibody.

Green : primary antibody

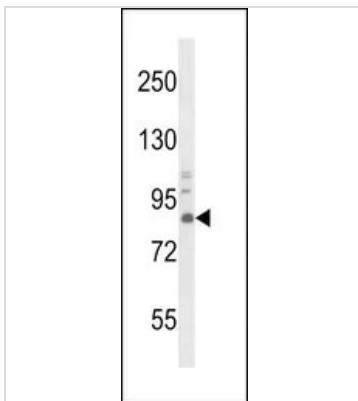
Blue : negative control


GTX81329 ICC/IF Image

ICC/IF analysis of MDA-MB231 cells using GTX81329 TrkA antibody.

Green : TrkA

Blue : DAPI


GTX81329 WB Image

WB analysis of mouse brain tissue lysate (35ug/lane) using GTX81329 TrkA antibody.



For full product information, images and publications, please visit our [website](https://www.genetex.com).