

## ROR1 antibody

Cat. No. GTX81334

Host	Rabbit
Clonality	Polyclonal
Isotype	IgG
Applications	WB, IHC-P, FCM
Reactivity	Human, Mouse

Package  
200 µl

## Applications

## Application Note

\*Optimal dilutions/concentrations should be determined by the researcher.

Suggested dilution	Recommended dilution
WB	1:1000
IHC-P	1:10-1:50
FCM	1:25

Not tested in other applications.

Calculated MW 104 kDa. ([Note](#))

## Properties

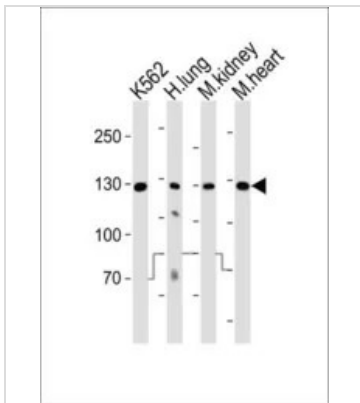
Form	Liquid
Buffer	PBS
Preservative	0.09% Sodium azide
Storage	Store as concentrated solution. Centrifuge briefly prior to opening vial. For short-term storage (1-2 weeks), store at 4°C. For long-term storage, aliquot and store at -20°C or below. Avoid multiple freeze-thaw cycles.
Concentration	Batch dependent (Please refer to the vial label for the specific concentration.)
Immunogen	This ROR1 antibody is generated from rabbits immunized with recombinant human ROR1 protein (aa region: 112 - 399).
Purification	Protein A purified, followed by peptide affinity purification.
Conjugation	Unconjugated

## Note

For laboratory research use only. Not for any clinical, therapeutic, or diagnostic use in humans or animals. Not for animal or human consumption.

Purchasers shall not, and agree not to enable third parties to, analyze, copy, reverse engineer or otherwise attempt to determine the structure or sequence of the product.

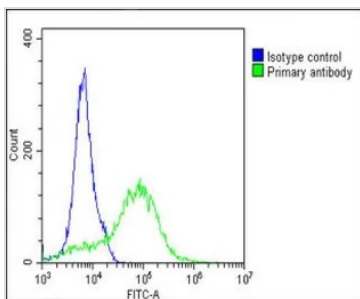
For full product information, images and publications, please visit our [website](#).

**DATA IMAGES**

**GTx81334 WB Image**

WB analysis of K562 cells, human lung, mouse kidney, mouse heart tissue using GTx81334 ROR1 antibody.

Loading : 20ug per lane

Dilution : 1:1000


**GTx81334 FCM Image**

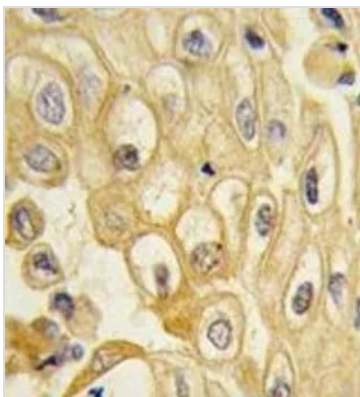
FACS analysis of A549 cells using GTx81334 ROR1 antibody.

Green : ROR1

Blue : Isotype control

Fixation : 2% paraformaldehyde (PFA) (10 min)

Dilution : 1:25


**GTx81334 IHC-P Image**

IHC-P analysis of human lung carcinoma using GTx81334 ROR1 antibody.



For full product information, images and publications, please visit our [website](https://www.genetex.com).