

RBM3 antibody, C-term

Cat. No. GTX81473

Host	Rabbit
Clonality	Polyclonal
Isotype	IgG
Applications	WB, IHC-P, FCM
Reactivity	Human, Mouse

Package
400 µl

Applications

Application Note

*Optimal dilutions/concentrations should be determined by the researcher.

Suggested dilution	Recommended dilution
WB	1:1000
IHC-P	1:50-1:100
FCM	1:10-1:50

Not tested in other applications.

Calculated MW 17 kDa. ([Note](#))

Properties

Form	Liquid
Buffer	PBS
Preservative	0.09% Sodium azide
Storage	Store as concentrated solution. Centrifuge briefly prior to opening vial. For short-term storage (1-2 weeks), store at 4°C. For long-term storage, aliquot and store at -20°C or below. Avoid multiple freeze-thaw cycles.
Concentration	Batch dependent (Please refer to the vial label for the specific concentration.)
Immunogen	KLH conjugated synthetic peptide between 128-157 amino acids from the C-terminal region of human RBM3.
Purification	Saturated Ammonium Sulfate (SAS) precipitation followed by dialysis against PBS.
Conjugation	Unconjugated

Note

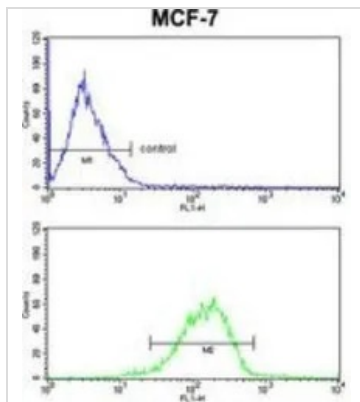
For laboratory research use only. Not for any clinical, therapeutic, or diagnostic use in humans or animals. Not for animal or human consumption.

Purchasers shall not, and agree not to enable third parties to, analyze, copy, reverse engineer or otherwise attempt to determine the structure or sequence of the product.



For full product information, images and publications, please visit our [website](#).

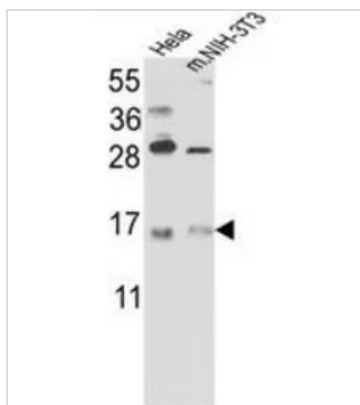
DATA IMAGES


GTx81473 FCM Image

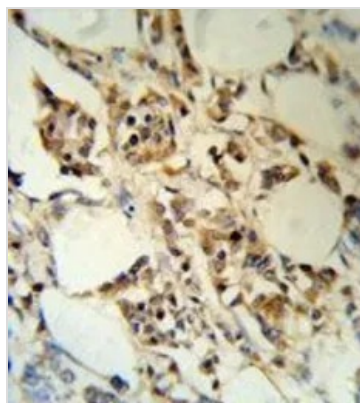
FACS analysis of MCF-7 cells using GTx81473 RBM3 antibody, C-term.

Top histogram : negative control

Bottom histogram : MCF-7 cells


GTx81473 WB Image

WB analysis of HeLa cell lysate and NIH-3T3 tissue lysate(35ug/lane) using GTx81473 RBM3 antibody, C-term.


GTx81473 IHC-P Image

IHC-P analysis of human breast carcinoma using GTx81473 RBM3 antibody, C-term.



For full product information, images and publications, please visit our [website](http://www.genetex.com).