

# TMPRSS2 antibody, Internal

**Cat. No. GTX81494**

<b>Host</b>	Rabbit
<b>Clonality</b>	Polyclonal
<b>Isotype</b>	IgG
<b>Application</b>	WB, ICC/IF, FACS
<b>Reactivity</b>	Human

Reference ( 2 )  
Package  
400 µl

## APPLICATION

### Application Note

\*Optimal dilutions/concentrations should be determined by the researcher.

Suggested dilution	Recommended dilution
WB	1:1000
ICC/IF	Assay dependent
FACS	1:10-1:50

Not tested in other applications.

**Calculated MW** 54 kDa. ( [Note](#) )

## PROPERTIES

<b>Form</b>	Liquid
<b>Buffer</b>	PBS
<b>Preservative</b>	0.09% Sodium azide
<b>Storage</b>	Store as concentrated solution. Centrifuge briefly prior to opening vial. For short-term storage (1-2 weeks), store at 4°C. For long-term storage, aliquot and store at -20°C or below. Avoid multiple freeze-thaw cycles.
<b>Concentration</b>	Batch dependent (Please refer to the vial label for the specific concentration.)
<b>Immunogen</b>	KLH conjugated synthetic peptide between 314-343 amino acids from the Central region of human TMPRSS2.
<b>Purification</b>	Saturated Ammonium Sulfate (SAS) precipitation followed by dialysis against PBS.
<b>Conjugation</b>	Unconjugated

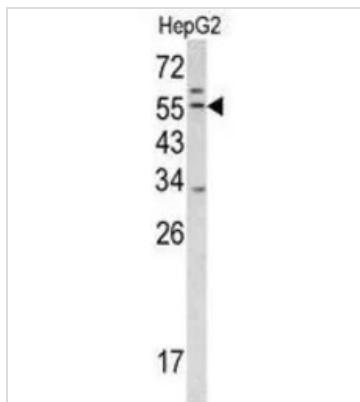
### Note

For laboratory research use only. Not for any clinical, therapeutic, or diagnostic use in humans or animals. Not for animal or human consumption.

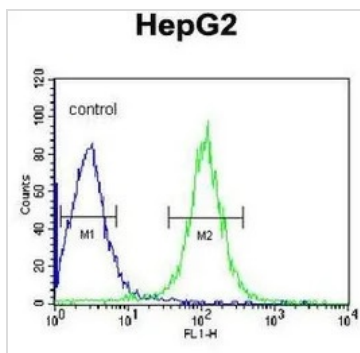
Purchasers shall not, and agree not to enable third parties to, analyze, copy, reverse engineer or otherwise attempt to determine the structure or sequence of the product.



For full product information, images and publications, please visit our [website](#).

**DATA IMAGES**

**GTX81494 WB Image**

WB analysis of HepG2 cell lysate (35ug/lane) using GTX81494 TMPRSS2 antibody, Internal.


**GTX81494 FACS Image**

FACS analysis of HepG2 cells using GTX81494 TMPRSS2 antibody, Internal.

Green : primary antibody

Blue : negative control



For full product information, images and publications, please visit our [website](#).