

## Factor B (Bb fragment) antibody, Internal

Cat. No. GTX81508

|              |                   |
|--------------|-------------------|
| Host         | Rabbit            |
| Clonality    | Polyclonal        |
| Isotype      | IgG               |
| Applications | WB, IHC-P, IHC-Fr |
| Reactivity   | Human, Mouse      |

References ( 2 )

Package

400 µl

## Applications

## Application Note

\*Optimal dilutions/concentrations should be determined by the researcher.

| Suggested dilution | Recommended dilution |
|--------------------|----------------------|
| WB                 | 1:1000               |
| IHC-P              | 1:50-1:100           |
| IHC-Fr             | Assay dependent      |

Not tested in other applications.

Calculated MW 86 kDa. ( [Note](#) )

## Properties

|               |  |
|---------------|--|
| Form          | Liquid   |
| Buffer        | PBS  |
| Preservative  | 0.09% Sodium azide   |
| Storage       | Store as concentrated solution. Centrifuge briefly prior to opening vial. For short-term storage (1-2 weeks), store at 4°C. For long-term storage, aliquot and store at -20°C or below. Avoid multiple freeze-thaw cycles. |
| Concentration | Batch dependent (Please refer to the vial label for the specific concentration.)   |
| Immunogen     | KLH conjugated synthetic peptide between 395-422 amino acids from the Central region of human BF.  |
| Purification  | Saturated Ammonium Sulfate (SAS) precipitation followed by dialysis against PBS.   |
| Conjugation   | Unconjugated   |

## Note

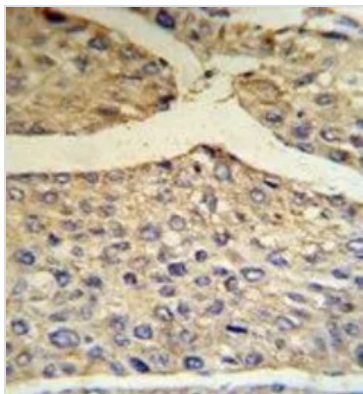
For laboratory research use only. Not for any clinical, therapeutic, or diagnostic use in humans or animals. Not for animal or human consumption.

Purchasers shall not, and agree not to enable third parties to, analyze, copy, reverse engineer or otherwise attempt to determine the structure or sequence of the product.



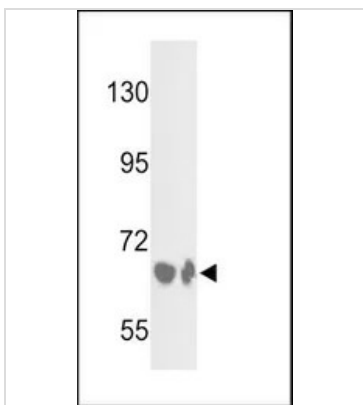
For full product information, images and publications, please visit our [website](#).

## DATA IMAGES



### GTx81508 IHC-P Image

IHC-P analysis of human hepatocarcinoma using GTx81508 Factor B antibody, Internal.



### GTx81508 WB Image

WB analysis of HepG2 cell and mouse liver tissue lysate (35ug/lane) using GTx81508 Factor B antibody, Internal.



For full product information, images and publications, please visit our [website](#).