

Glutaredoxin 2 antibody, C-term

Cat. No. GTX81538

Host	Rabbit
Clonality	Polyclonal
Isotype	IgG
Applications	WB, IHC-P, FCM
Reactivity	Human, Mouse

References (2)

Package

400 µl

Applications

Application Note

*Optimal dilutions/concentrations should be determined by the researcher.

Suggested dilution	Recommended dilution
WB	1:1000
IHC-P	1:50-1:100
FCM	1:10-1:50

Not tested in other applications.

Calculated MW 18 kDa. ([Note](#))

Properties

Form	Liquid
Buffer	PBS
Preservative	0.09% Sodium azide
Storage	Store as concentrated solution. Centrifuge briefly prior to opening vial. For short-term storage (1-2 weeks), store at 4°C. For long-term storage, aliquot and store at -20°C or below. Avoid multiple freeze-thaw cycles.
Concentration	Batch dependent (Please refer to the vial label for the specific concentration.)
Immunogen	KLH conjugated synthetic peptide between 120-146 amino acids from the C-terminal region of human GLRX2.
Purification	Saturated Ammonium Sulfate (SAS) precipitation followed by dialysis against PBS.
Conjugation	Unconjugated

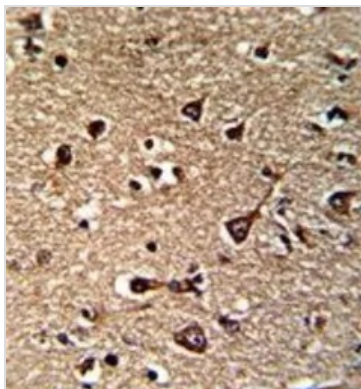
Note

For laboratory research use only. Not for any clinical, therapeutic, or diagnostic use in humans or animals. Not for animal or human consumption.

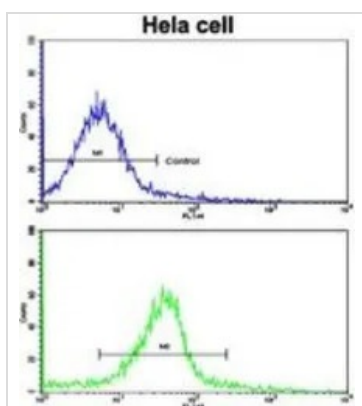
Purchasers shall not, and agree not to enable third parties to, analyze, copy, reverse engineer or otherwise attempt to determine the structure or sequence of the product.



For full product information, images and publications, please visit our [website](#).

DATA IMAGES

GTx81538 IHC-P Image

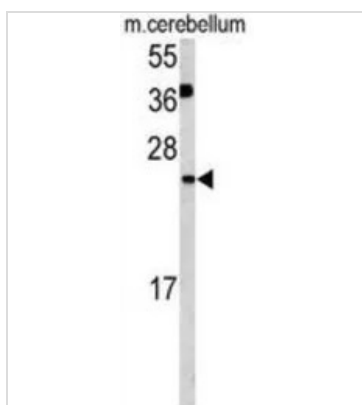
IHC-P analysis of human brain tissue using GTx81538 Glutaredoxin 2 antibody, C-term.


GTx81538 FCM Image

FACS analysis of HeLa cells using GTx81538 Glutaredoxin 2 antibody, C-term.

Top histogram : negative control

Bottom histogram : HeLa cells


GTx81538 WB Image

WB analysis of mouse cerebellum tissue lysate (35ug/lane) using GTx81538 Glutaredoxin 2 antibody, C-term.



For full product information, images and publications, please visit our [website](http://www.genetex.com).