

EN1 antibody, N-term

Cat. No. GTX81554

Host	Rabbit
Clonality	Polyclonal
Isotype	IgG
Applications	WB, ICC/IF, IHC-P
Reactivity	Human

Package
200 µl

Applications

Application Note

*Optimal dilutions/concentrations should be determined by the researcher.

Suggested dilution	Recommended dilution
WB	1:1000
ICC/IF	1:10-1:50
IHC-P	1:10-1:50

Not tested in other applications.

Calculated MW 40 kDa. ([Note](#))

Properties

Form	Liquid
Buffer	PBS
Preservative	0.09% Sodium azide
Storage	Store as concentrated solution. Centrifuge briefly prior to opening vial. For short-term storage (1-2 weeks), store at 4°C. For long-term storage, aliquot and store at -20°C or below. Avoid multiple freeze-thaw cycles.
Concentration	Batch dependent (Please refer to the vial label for the specific concentration.)
Immunogen	KLH conjugated synthetic peptide between 1-30 amino acids from the N-terminal region of human EN1 (Engrailed 1).
Purification	Protein A purified, followed by peptide affinity purification.
Conjugation	Unconjugated

Note

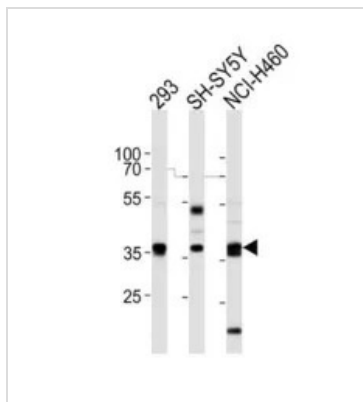
For laboratory research use only. Not for any clinical, therapeutic, or diagnostic use in humans or animals. Not for animal or human consumption.

Purchasers shall not, and agree not to enable third parties to, analyze, copy, reverse engineer or otherwise attempt to determine the structure or sequence of the product.



For full product information, images and publications, please visit our [website](#).

DATA IMAGES

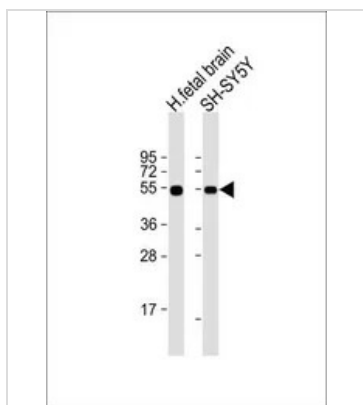


GTX81554 WB Image

WB analysis of 293, SH-SY5Y, NCI-H460 cell using GTX81554 EN1 antibody, N-term.

Loading : 20ug per lane

Dilution : 1:1000



GTX81554 WB Image

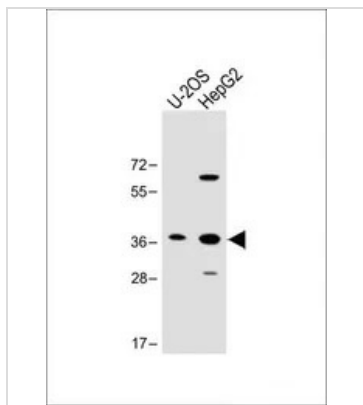
WB analysis of various samples using GTX81554 EN1 antibody, N-term.

Lane 1: human fetal brain lysate

Lane 2: SH-SY5Y whole cell lysate

Loading : 20 µg per lane

Dilution : 1:1000



GTX81554 WB Image

WB analysis of various samples using GTX81554 EN1 antibody, N-term.

Lane 1: U-2OS whole cell lysate

Lane 2: HepG2 whole cell lysate

Loading : 20 µg per lane

Dilution : 1:1000



For full product information, images and publications, please visit our [website](#).