

CD62L antibody, C-term

Cat. No. GTX81602

Host	Rabbit
Clonality	Polyclonal
Isotype	IgG
Applications	WB, IHC-P, FCM
Reactivity	Human

Package
200 µl

Applications

Application Note

*Optimal dilutions/concentrations should be determined by the researcher.

Suggested dilution	Recommended dilution
WB	1:2000
IHC-P	1:10-1:50
FCM	1:25

Not tested in other applications.

Calculated MW 42 kDa. ([Note](#))

Properties

Form	Liquid
Buffer	PBS
Preservative	0.09% Sodium azide
Storage	Store as concentrated solution. Centrifuge briefly prior to opening vial. For short-term storage (1-2 weeks), store at 4°C. For long-term storage, aliquot and store at -20°C or below. Avoid multiple freeze-thaw cycles.
Concentration	Batch dependent (Please refer to the vial label for the specific concentration.)
Immunogen	KLH conjugated synthetic peptide between 346-372 amino acids from the C-terminal region of human SELL
Purification	Protein A purified, followed by peptide affinity purification.
Conjugation	Unconjugated

Note

For laboratory research use only. Not for any clinical, therapeutic, or diagnostic use in humans or animals. Not for animal or human consumption.

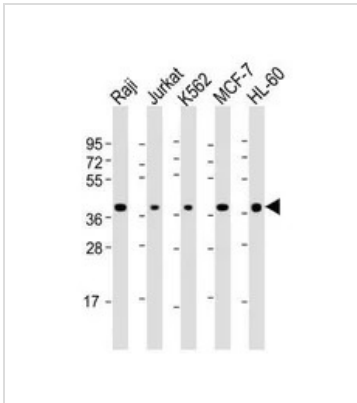
Purchasers shall not, and agree not to enable third parties to, analyze, copy, reverse engineer or otherwise attempt to determine the structure or sequence of the product.



For full product information, images and publications, please visit our [website](#).

Date 2026 / 01 / 02 Page 1 of 2

DATA IMAGES



GTX81602 WB Image

WB analysis of various samples using GTX81602 CD62L antibody, C-term.

Lane 1: Raji whole cell lysate

Lane 2: Jurkat whole cell lysate

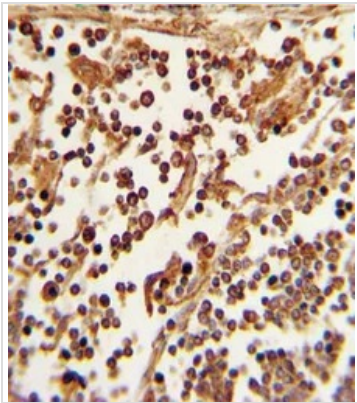
Lane 3: K562 whole cell lysate

Lane 4: MCF-7 whole cell lysate

Lane 5: HL-60 whole cell lysate

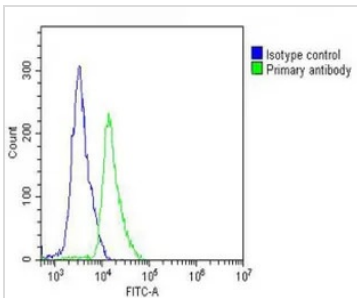
Loading : 20 µg per lane

Dilution : 1:2000



GTX81602 IHC-P Image

IHC-P analysis of human lymph tissue using GTX81602 CD62L antibody, C-term.



GTX81602 FCM Image

FACS analysis of Jurkat cells using GTX81602 CD62L antibody, C-term.

Green : CD62L

Blue : Isotype control

Fixation : 2% paraformaldehyde (PFA) (10 min)

Dilution : 1:25



For full product information, images and publications, please visit our [website](https://www.genetex.com).