

## FTO antibody, N-term

Cat. No. GTX81611

Host	Rabbit
Clonality	Polyclonal
Isotype	IgG
Applications	WB, IHC-P, FCM
Reactivity	Human

Package  
400 µl

## Applications

## Application Note

\*Optimal dilutions/concentrations should be determined by the researcher.

Suggested dilution	Recommended dilution
WB	1:1000
IHC-P	1:50-1:100
FCM	1:10-1:50

Not tested in other applications.

Calculated MW 58 kDa. ( [Note](#) )

## Properties

Form	Liquid
Buffer	PBS
Preservative	0.09% Sodium azide
Storage	Store as concentrated solution. Centrifuge briefly prior to opening vial. For short-term storage (1-2 weeks), store at 4°C. For long-term storage, aliquot and store at -20°C or below. Avoid multiple freeze-thaw cycles.
Concentration	Batch dependent (Please refer to the vial label for the specific concentration.)
Immunogen	KLH conjugated synthetic peptide between 1-30 amino acids from the N-terminal region of human FTO.
Purification	Protein A purified, followed by peptide affinity purification.
Conjugation	Unconjugated

## Note

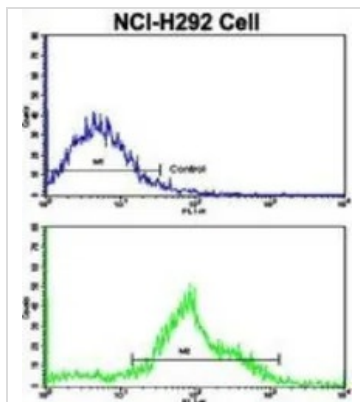
For laboratory research use only. Not for any clinical, therapeutic, or diagnostic use in humans or animals. Not for animal or human consumption.

Purchasers shall not, and agree not to enable third parties to, analyze, copy, reverse engineer or otherwise attempt to determine the structure or sequence of the product.



For full product information, images and publications, please visit our [website](#).

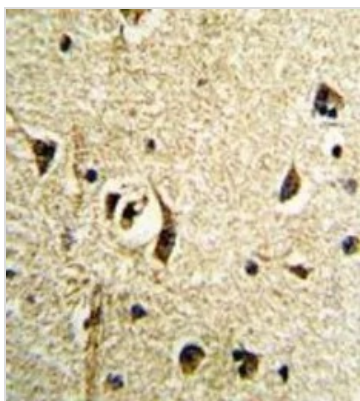
## DATA IMAGES


**GTX81611 FCM Image**

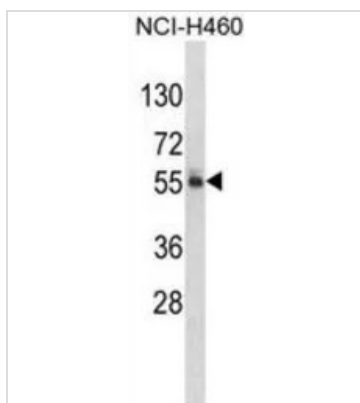
FACS analysis of NCI-H292 cells using GTX81611 FTO antibody, N-term.

Top histogram : negative control

Bottom histogram : NCI-H292 cells


**GTX81611 IHC-P Image**

IHC-P analysis of human brain tissue using GTX81611 FTO antibody, N-term.


**GTX81611 WB Image**

WB analysis of NCI-H460 cell lysate (35ug/lane) using GTX81611 FTO antibody, N-term.



For full product information, images and publications, please visit our [website](https://www.genetex.com).