

eNOS antibody, N-term

Cat. No. GTX81622

Host	Rabbit
Clonality	Polyclonal
Isotype	IgG
Applications	ICC/IF, IHC-P, FCM
Reactivity	Human

Package
400 µl

Applications

Application Note

*Optimal dilutions/concentrations should be determined by the researcher.

Suggested dilution	Recommended dilution
ICC/IF	1:10-1:50
IHC-P	1:10-1:50
FCM	1:10-1:50

Not tested in other applications.

Properties

Form	Liquid
Buffer	PBS
Preservative	0.09% Sodium azide
Storage	Store as concentrated solution. Centrifuge briefly prior to opening vial. For short-term storage (1-2 weeks), store at 4°C. For long-term storage, aliquot and store at -20°C or below. Avoid multiple freeze-thaw cycles.
Concentration	Batch dependent (Please refer to the vial label for the specific concentration.)
Immunogen	KLH conjugated synthetic peptide between 48-75 amino acids from the N-terminal region of human NOS3.
Purification	Protein A purified, followed by peptide affinity purification.
Conjugation	Unconjugated

Note

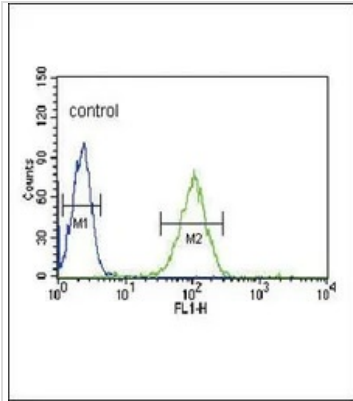
For laboratory research use only. Not for any clinical, therapeutic, or diagnostic use in humans or animals. Not for animal or human consumption.

Purchasers shall not, and agree not to enable third parties to, analyze, copy, reverse engineer or otherwise attempt to determine the structure or sequence of the product.



For full product information, images and publications, please visit our [website](#).

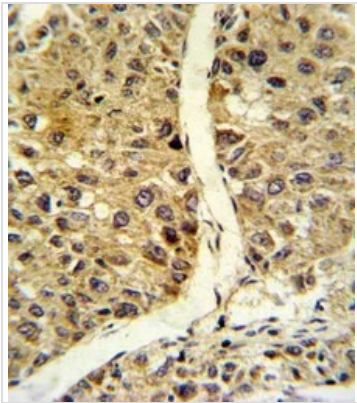
DATA IMAGES

**GTX81622 FCM Image**

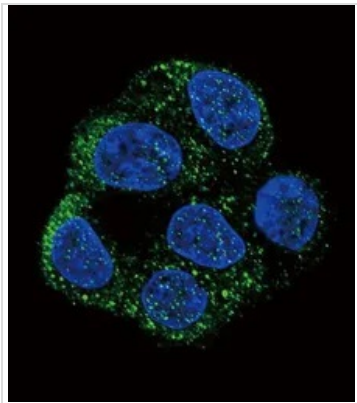
FACS analysis of HL-60 cells using GTX81622 eNOS antibody, N-term.

Green : primary antibody

Blue : negative control

**GTX81622 IHC-P Image**

IHC-P analysis of human hepatocarcinoma using GTX81622 eNOS antibody, N-term.

**GTX81622 ICC/IF Image**

ICC/IF analysis of HepG2 cells using GTX81622 eNOS antibody, N-term.

Green : eNOS

Blue : DAPI



For full product information, images and publications, please visit our [website](#).