

## UNC5C antibody, Internal

Cat. No. GTX81651

Host	Rabbit
Clonality	Polyclonal
Isotype	IgG
Applications	WB, IHC-P, FCM
Reactivity	Human

Package  
400 µl

## Applications

## Application Note

\*Optimal dilutions/concentrations should be determined by the researcher.

Suggested dilution	Recommended dilution
WB	1:1000
IHC-P	1:50-1:100
FCM	1:10-1:50

Not tested in other applications.

Calculated MW 103 kDa. ([Note](#))

## Properties

Form	Liquid
Buffer	PBS
Preservative	0.09% Sodium azide
Storage	Store as concentrated solution. Centrifuge briefly prior to opening vial. For short-term storage (1-2 weeks), store at 4°C. For long-term storage, aliquot and store at -20°C or below. Avoid multiple freeze-thaw cycles.
Concentration	Batch dependent (Please refer to the vial label for the specific concentration.)
Immunogen	KLH conjugated synthetic peptide between 188-217 amino acids from the Central region of human UNC5C.
Purification	Protein A purified, followed by peptide affinity purification.
Conjugation	Unconjugated

## Note

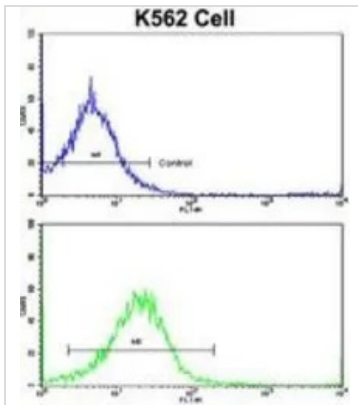
For laboratory research use only. Not for any clinical, therapeutic, or diagnostic use in humans or animals. Not for animal or human consumption.

Purchasers shall not, and agree not to enable third parties to, analyze, copy, reverse engineer or otherwise attempt to determine the structure or sequence of the product.



For full product information, images and publications, please visit our [website](#).

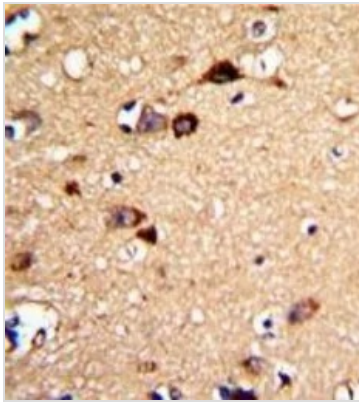
## DATA IMAGES


**GTX81651 FCM Image**

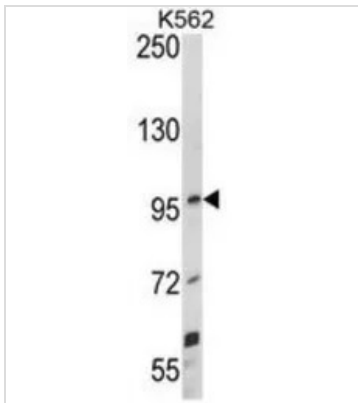
FACS analysis of K562 cells using GTX81651 UNC5C antibody, Internal.

Top histogram : negative control

Bottom histogram : K562 cells


**GTX81651 IHC-P Image**

IHC-P analysis of human brain tissue using GTX81651 UNC5C antibody, Internal.


**GTX81651 WB Image**

WB analysis of K562 cell lysate (35ug/lane) using GTX81651 UNC5C antibody, Internal.



For full product information, images and publications, please visit our [website](http://www.genetex.com).