

## Calreticulin antibody, Internal

Cat. No. GTX81663

Host	Rabbit
Clonality	Polyclonal
Isotype	IgG
Applications	WB, IHC-P, FCM
Reactivity	Human, Rat

Package  
200 µl

## Applications

## Application Note

\*Optimal dilutions/concentrations should be determined by the researcher.

Suggested dilution	Recommended dilution
WB	1:1000
IHC-P	1:50-1:100
FCM	1:25

Not tested in other applications.

Calculated MW 48 kDa. ( [Note](#) )

## Properties

Form	Liquid
Buffer	PBS
Preservative	0.09% Sodium azide
Storage	Store as concentrated solution. Centrifuge briefly prior to opening vial. For short-term storage (1-2 weeks), store at 4°C. For long-term storage, aliquot and store at -20°C or below. Avoid multiple freeze-thaw cycles.
Concentration	Batch dependent (Please refer to the vial label for the specific concentration.)
Immunogen	KLH conjugated synthetic peptide between 277-305 amino acids from the Central region of human CALR(Calreticulin).
Purification	Protein A purified, followed by peptide affinity purification.
Conjugation	Unconjugated

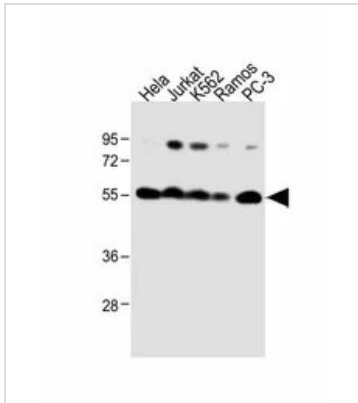
## Note

For laboratory research use only. Not for any clinical, therapeutic, or diagnostic use in humans or animals. Not for animal or human consumption.

Purchasers shall not, and agree not to enable third parties to, analyze, copy, reverse engineer or otherwise attempt to determine the structure or sequence of the product.



For full product information, images and publications, please visit our [website](#).

**DATA IMAGES**

**GTx81663 WB Image**

WB analysis of various samples using GTx81663 Calreticulin antibody, Internal.

Lane 1: HeLa whole cell lysate

Lane 2: Jurkat whole cell lysate

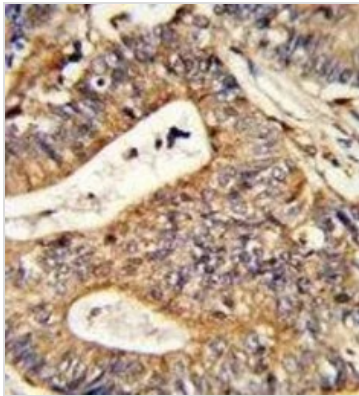
Lane 3: K562 whole cell lysate

Lane 4: Ramos whole cell lysate

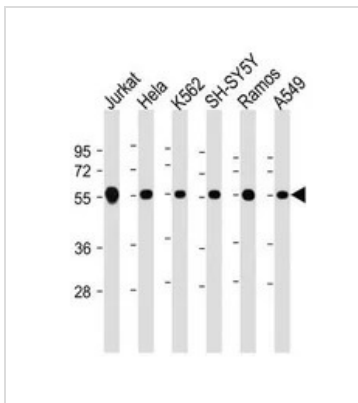
Lane 5: PC-3 whole cell lysate

Loading : 20 µg per lane

Dilution : 1:1000


**GTx81663 IHC-P Image**

IHC-P analysis of human colon carcinoma using GTx81663 Calreticulin antibody, Internal.


**GTx81663 WB Image**

WB analysis of various samples using GTx81663 Calreticulin antibody, Internal.

Lane 1: Jurkat whole cell lysate

Lane 2: HeLa whole cell lysate

Lane 3: K562 whole cell lysate

Lane 4: SH-SY5Y whole cell lysate

Lane 5: Ramos whole cell lysate

Lane 6: A549 whole cell lysate

Loading : 20 µg per lane

Dilution : 1:2000



For full product information, images and publications, please visit our [website](http://www.genetex.com).