

TFII-I antibody, C-term

Cat. No. GTX81672

Host	Rabbit
Clonality	Polyclonal
Isotype	IgG
Applications	WB, ICC/IF, IHC-P, FCM
Reactivity	Human

Package
400 µl

Applications

Application Note

*Optimal dilutions/concentrations should be determined by the researcher.

Suggested dilution	Recommended dilution
WB	1:1000
ICC/IF	1:10-1:50
IHC-P	1:50-1:100
FCM	1:10-1:50

Not tested in other applications.

Calculated MW 112 kDa. ([Note](#))

Properties

Form	Liquid
Buffer	PBS
Preservative	0.09% Sodium azide
Storage	Store as concentrated solution. Centrifuge briefly prior to opening vial. For short-term storage (1-2 weeks), store at 4°C. For long-term storage, aliquot and store at -20°C or below. Avoid multiple freeze-thaw cycles.
Concentration	Batch dependent (Please refer to the vial label for the specific concentration.)
Immunogen	KLH conjugated synthetic peptide between 956-985 amino acids from the C-terminal region of human GTF2I.
Purification	Protein A purified, followed by peptide affinity purification.
Conjugation	Unconjugated

Note

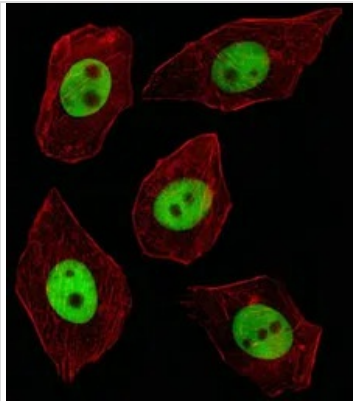
For laboratory research use only. Not for any clinical, therapeutic, or diagnostic use in humans or animals. Not for animal or human consumption.

Purchasers shall not, and agree not to enable third parties to, analyze, copy, reverse engineer or otherwise attempt to determine the structure or sequence of the product.



For full product information, images and publications, please visit our [website](#).

DATA IMAGES



GTX81672 ICC/IF Image

ICC/IF analysis of A549 cells using GTX81672 TFII-I antibody, C-term.

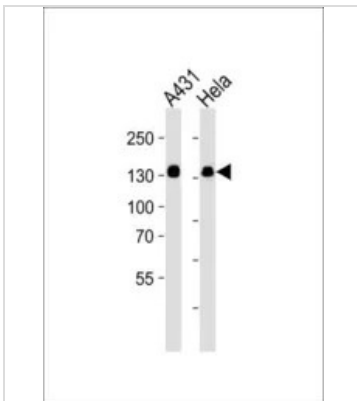
Green : TFII-I

Red : Actin filament

Fixation : 4% paraformaldehyde (PFA) (20 min)

Permeabilization : Triton X-100 (0.1%, 10 min)

Dilution : 1:25

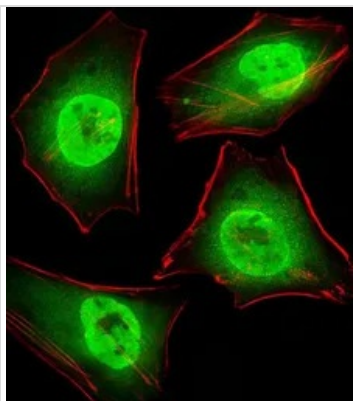


GTX81672 WB Image

WB analysis of A431, HeLa cell using GTX81672 TFII-I antibody, C-term.

Loading : 35ug per lane

Dilution : 1:1000



GTX81672 ICC/IF Image

ICC/IF analysis of HeLa cells using GTX81672 TFII-I antibody, C-term.

Green : TFII-I

Red : Actin filament

Blue : cell nucleus

Dilution : 1:25



For full product information, images and publications, please visit our [website](https://www.genetex.com).