

## SPINK5 antibody, N-term

Cat. No. GTX81680

Host	Rabbit
Clonality	Polyclonal
Isotype	IgG
Application	WB, IHC-P, FACS
Reactivity	Human

Package  
400 µl

## APPLICATION

## Application Note

\*Optimal dilutions/concentrations should be determined by the researcher.

Suggested dilution	Recommended dilution
WB	1:1000
IHC-P	1:10-1:50
FACS	1:10-1:50

Not tested in other applications.

Calculated MW 121 kDa. ([Note](#))

## PROPERTIES

Form	Liquid
Buffer	PBS
Preservative	0.09% Sodium azide
Storage	Store as concentrated solution. Centrifuge briefly prior to opening vial. For short-term storage (1-2 weeks), store at 4°C. For long-term storage, aliquot and store at -20°C or below. Avoid multiple freeze-thaw cycles.
Concentration	Batch dependent (Please refer to the vial label for the specific concentration.)
Immunogen	KLH conjugated synthetic peptide between 188-217 amino acids from the N-terminal region of human SPINK5.
Purification	Protein A purified, followed by peptide affinity purification.
Conjugation	Unconjugated

## Note

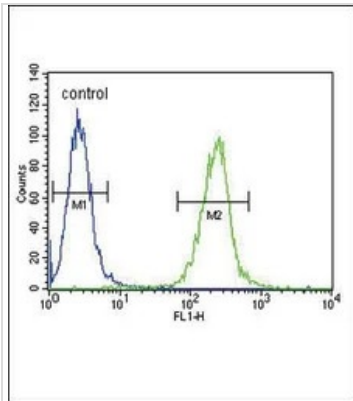
For laboratory research use only. Not for any clinical, therapeutic, or diagnostic use in humans or animals. Not for animal or human consumption.

Purchasers shall not, and agree not to enable third parties to, analyze, copy, reverse engineer or otherwise attempt to determine the structure or sequence of the product.



For full product information, images and publications, please visit our [website](#).

## DATA IMAGES

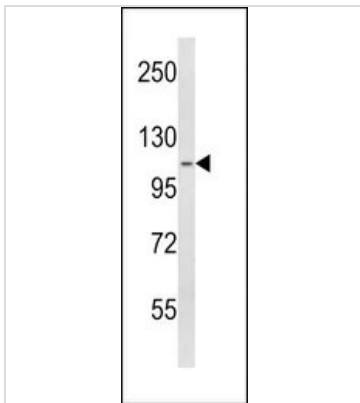


### GTx81680 FACS Image

FACS analysis of A2058 cells using GTx81680 SPINK5 antibody, N-term.

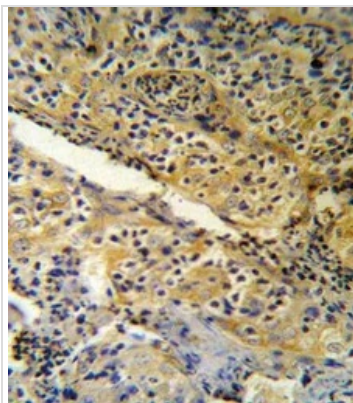
Green : primary antibody

Blue : negative control



### GTx81680 WB Image

WB analysis of A2058 cell lysate (35ug/lane) using GTx81680 SPINK5 antibody, N-term.



### GTx81680 IHC-P Image

IHC-P analysis of human tonsil using GTx81680 SPINK5 antibody, N-term.



For full product information, images and publications, please visit our [website](https://www.genetex.com).