

DFNA5 antibody, N-term

Cat. No. GTX81693

Host	Rabbit
Clonality	Polyclonal
Isotype	IgG
Applications	WB, ICC/IF, IHC-P, FCM
Reactivity	Human, Mouse

[References \(1 \)](#)
[Package](#)

200 µl

Applications

Application Note

*Optimal dilutions/concentrations should be determined by the researcher.

Suggested dilution	Recommended dilution
WB	1:1000
ICC/IF	Assay dependent
IHC-P	1:50-1:100
FCM	1:10-1:50

Not tested in other applications.

Calculated MW 55 kDa. ([Note](#))

Properties

Form	Liquid
Buffer	PBS, 0.09% sodium azide.
Storage	Store as concentrated solution. Centrifuge briefly prior to opening vial. For short-term storage (1-2 weeks), store at 4°C. For long-term storage, aliquot and store at -20°C or below. Avoid multiple freeze-thaw cycles.
Concentration	Batch dependent (Please refer to the vial label for the specific concentration.)
Immunogen	KLH conjugated synthetic peptide between 59-87 amino acids from the N-terminal region of human DFNA5.
Purification	Saturated Ammonium Sulfate (SAS) precipitation followed by dialysis against PBS.
Conjugation	Unconjugated

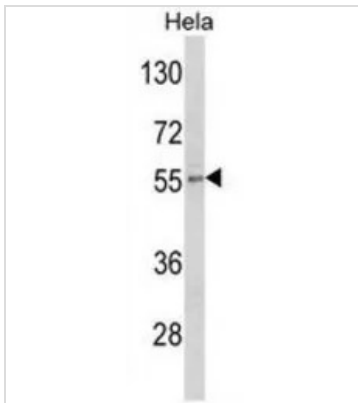
Note

For laboratory research use only. Not for any clinical, therapeutic, or diagnostic use in humans or animals. Not for animal or human consumption.

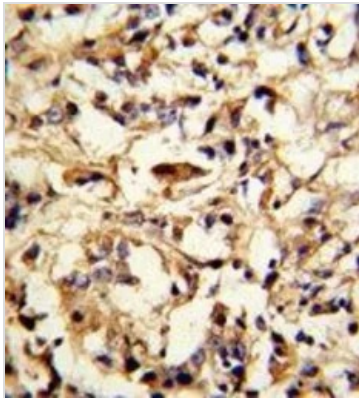
Purchasers shall not, and agree not to enable third parties to, analyze, copy, reverse engineer or otherwise attempt to determine the structure or sequence of the product.



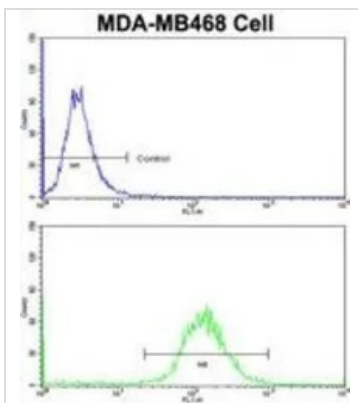
For full product information, images and publications, please visit our [website](#).

DATA IMAGES

GTx81693 WB Image

WB analysis of HeLa cell lysate (35ug/lane) using GTx81693 DFNA5 antibody, N-term.


GTx81693 IHC-P Image

IHC-P analysis of human breast carcinoma using GTx81693 DFNA5 antibody, N-term.


GTx81693 FCM Image

FACS analysis of MDA-MB468 cells using GTx81693 DFNA5 antibody, N-term.

Top histogram : negative control

Bottom histogram : MDA-MB468 cells



For full product information, images and publications, please visit our [website](http://www.genetex.com).