

ALAD antibody, C-term

Cat. No. GTX81701

| | |
|---------------------|----------------|
| Host | Rabbit |
| Clonality | Polyclonal |
| Isotype | IgG |
| Applications | WB, IHC-P, FCM |
| Reactivity | Human |

References (1)

Package

400 µl

Applications

Application Note

*Optimal dilutions/concentrations should be determined by the researcher.

| Suggested dilution | Recommended dilution |
|--------------------|----------------------|
| WB | 1:1000 |
| IHC-P | 1:50-1:100 |
| FCM | 1:10-1:50 |

Not tested in other applications.

Calculated MW 36 kDa. ([Note](#))

Properties

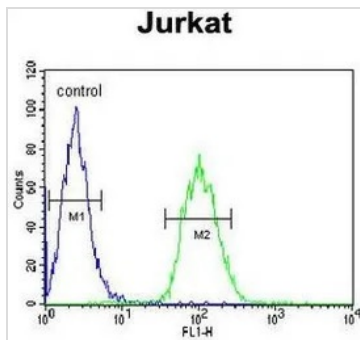
| | |
|----------------------|--|
| Form | Liquid |
| Buffer | PBS |
| Preservative | 0.09% Sodium azide |
| Storage | Store as concentrated solution. Centrifuge briefly prior to opening vial. For short-term storage (1-2 weeks), store at 4°C. For long-term storage, aliquot and store at -20°C or below. Avoid multiple freeze-thaw cycles. |
| Concentration | Batch dependent (Please refer to the vial label for the specific concentration.) |
| Immunogen | KLH conjugated synthetic peptide between 244-272 amino acids from the C-terminal region of human ALAD. |
| Purification | Saturated Ammonium Sulfate (SAS) precipitation followed by dialysis against PBS. |
| Conjugation | Unconjugated |

Note

For laboratory research use only. Not for any clinical, therapeutic, or diagnostic use in humans or animals. Not for animal or human consumption.

Purchasers shall not, and agree not to enable third parties to, analyze, copy, reverse engineer or otherwise attempt to determine the structure or sequence of the product.

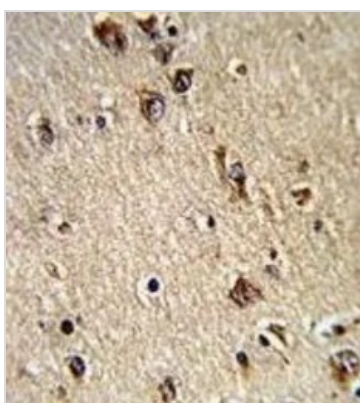
For full product information, images and publications, please visit our [website](#).

DATA IMAGES

GTX81701 FCM Image

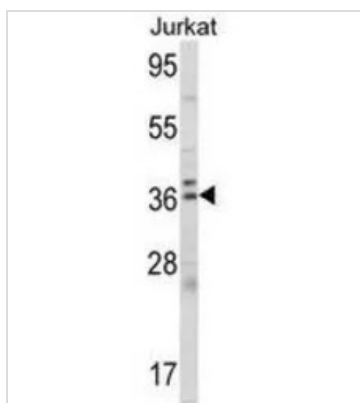
FACS analysis of Jurkat cells using GTX81701 ALAD antibody, C-term.

Green : primary antibody

Blue : negative control


GTX81701 IHC-P Image

IHC-P analysis of human brain tissue using GTX81701 ALAD antibody, C-term.


GTX81701 WB Image

WB analysis of Jurkat cell lysate (35ug/lane) using GTX81701 ALAD antibody, C-term.



For full product information, images and publications, please visit our [website](https://www.genetex.com).