

Hsp 60 antibody, N-term

Cat. No. GTX81712

Host	Rabbit
Clonality	Polyclonal
Isotype	IgG
Applications	WB, IHC-P
Reactivity	Human, Mouse

Package
400 µl

Applications

Application Note

*Optimal dilutions/concentrations should be determined by the researcher.

Suggested dilution	Recommended dilution
WB	1:1000
IHC-P	1:50-1:100

Not tested in other applications.

Calculated MW 55 kDa. ([Note](#))

Properties

Form	Liquid
Buffer	PBS
Preservative	0.09% Sodium azide
Storage	Store as concentrated solution. Centrifuge briefly prior to opening vial. For short-term storage (1-2 weeks), store at 4°C. For long-term storage, aliquot and store at -20°C or below. Avoid multiple freeze-thaw cycles.
Concentration	Batch dependent (Please refer to the vial label for the specific concentration.)
Immunogen	KLH conjugated synthetic peptide between 80-109 amino acids from the N-terminal region of human Hsp 60.
Purification	Protein A purified, followed by peptide affinity purification.
Conjugation	Unconjugated

Note

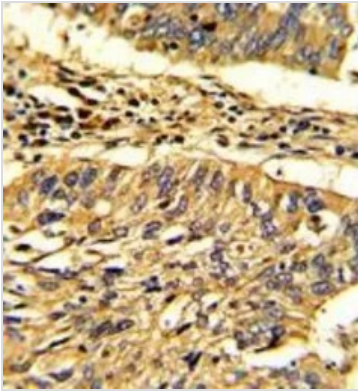
For laboratory research use only. Not for any clinical, therapeutic, or diagnostic use in humans or animals. Not for animal or human consumption.

Purchasers shall not, and agree not to enable third parties to, analyze, copy, reverse engineer or otherwise attempt to determine the structure or sequence of the product.



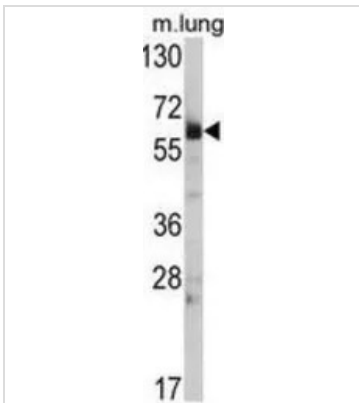
For full product information, images and publications, please visit our [website](#).

DATA IMAGES



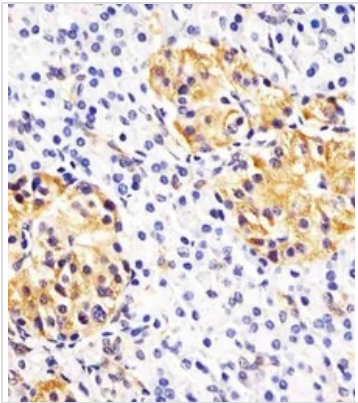
GTX81712 IHC-P Image

IHC-P analysis of human lung carcinoma using GTX81712 Hsp 60 antibody, N-term.



GTX81712 WB Image

WB analysis of mouse lung tissue lysate (35ug/lane) using GTX81712 Hsp 60 antibody, N-term.



GTX81712 IHC-P Image

IHC-P analysis of human pancreas tissue using GTX81712 Hsp 60 antibody, N-term.

Antigen retrieval : heat-induced antigen retrieval with citrate buffer (pH6)

Dilution : 1:25



For full product information, images and publications, please visit our [website](#).