

Calponin 1 antibody, N-term

Cat. No. GTX81714

Host	Rabbit
Clonality	Polyclonal
Isotype	IgG
Applications	WB, IHC-P, FCM
Reactivity	Human

References (1)

Package

400 µl

Applications

Application Note

*Optimal dilutions/concentrations should be determined by the researcher.

Suggested dilution	Recommended dilution
WB	1:1000
IHC-P	1:10-1:50
FCM	1:10-1:50

Not tested in other applications.

Calculated MW 33 kDa. ([Note](#))

Properties

Form	Liquid
Buffer	PBS
Preservative	0.09% Sodium azide
Storage	Store as concentrated solution. Centrifuge briefly prior to opening vial. For short-term storage (1-2 weeks), store at 4°C. For long-term storage, aliquot and store at -20°C or below. Avoid multiple freeze-thaw cycles.
Concentration	Batch dependent (Please refer to the vial label for the specific concentration.)
Immunogen	KLH conjugated synthetic peptide between 10-39 amino acids from the N-terminal region of human Calponin-1.
Purification	Saturated Ammonium Sulfate (SAS) precipitation followed by dialysis against PBS.
Conjugation	Unconjugated

Note

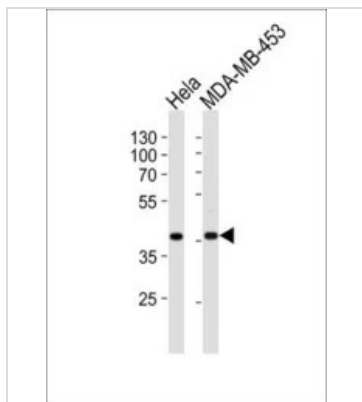
For laboratory research use only. Not for any clinical, therapeutic, or diagnostic use in humans or animals. Not for animal or human consumption.

Purchasers shall not, and agree not to enable third parties to, analyze, copy, reverse engineer or otherwise attempt to determine the structure or sequence of the product.



For full product information, images and publications, please visit our [website](#).

DATA IMAGES

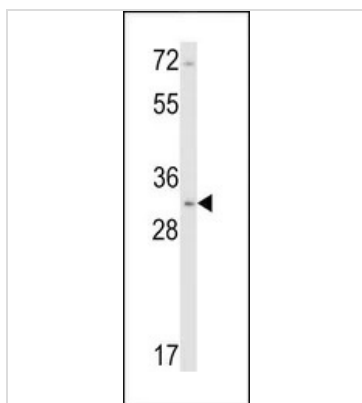


GTx81714 WB Image

WB analysis of HeLa, MDA-MB-453 cell using GTx81714 Calponin-1 antibody, N-term.

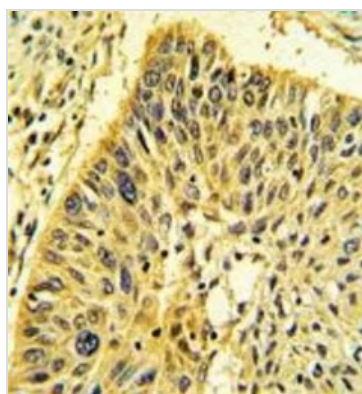
Loading : 20ug per lane

Dilution : 1:1000



GTx81714 WB Image

WB analysis of NCI-H460 cell lysate (35ug/lane) using GTx81714 Calponin-1 antibody, N-term.



GTx81714 IHC-P Image

IHC-P analysis of human lung carcinoma using GTx81714 Calponin-1 antibody, N-term.



For full product information, images and publications, please visit our [website](https://www.genetex.com).