

## Wnt1 antibody, C-term

Cat. No. GTX81721

Host	Rabbit
Clonality	Polyclonal
Isotype	IgG
Applications	WB, IHC-P, FCM
Reactivity	Human, Mouse

Package  
400 µl

## Applications

## Application Note

\*Optimal dilutions/concentrations should be determined by the researcher.

Suggested dilution	Recommended dilution
WB	1:1000
IHC-P	1:10-1:50
FCM	1:10-1:50

Not tested in other applications.

Calculated MW 41 kDa. ( [Note](#) )

## Properties

Form	Liquid
Buffer	PBS
Preservative	0.09% Sodium azide
Storage	Store as concentrated solution. Centrifuge briefly prior to opening vial. For short-term storage (1-2 weeks), store at 4°C. For long-term storage, aliquot and store at -20°C or below. Avoid multiple freeze-thaw cycles.
Concentration	Batch dependent (Please refer to the vial label for the specific concentration.)
Immunogen	KLH conjugated synthetic peptide between 260-288 amino acids from the C-terminal region of human WNT1.
Purification	Saturated Ammonium Sulfate (SAS) precipitation followed by dialysis against PBS.
Conjugation	Unconjugated

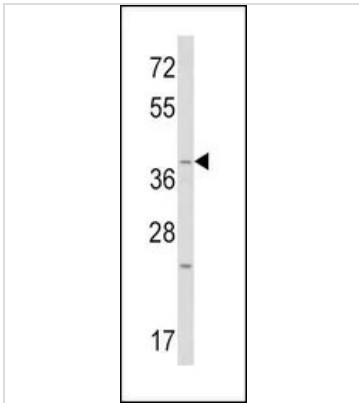
## Note

For laboratory research use only. Not for any clinical, therapeutic, or diagnostic use in humans or animals. Not for animal or human consumption.

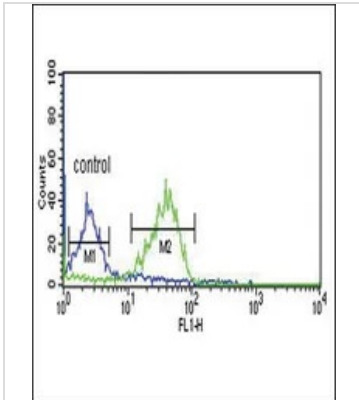
Purchasers shall not, and agree not to enable third parties to, analyze, copy, reverse engineer or otherwise attempt to determine the structure or sequence of the product.



For full product information, images and publications, please visit our [website](#).

**DATA IMAGES**

**GTX81721 WB Image**

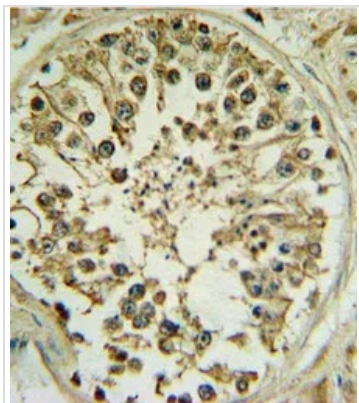
WB analysis of mouse heart tissue lysate (35ug/lane) using GTX81721 Wnt1 antibody, C-term.


**GTX81721 FCM Image**

FACS analysis of MCF-7 cells using GTX81721 Wnt1 antibody, C-term.

Green : primary antibody

Blue : negative control


**GTX81721 IHC-P Image**

IHC-P analysis of human testis tissue using GTX81721 Wnt1 antibody, C-term.



For full product information, images and publications, please visit our [website](http://www.genetex.com).